

projects from the runway

brother®

project
RUNWAY™
©2017 Brother International Corporation. All Rights Reserved.
projectrunway.com



Anthony Ryan Auld

Upcycled Sweater

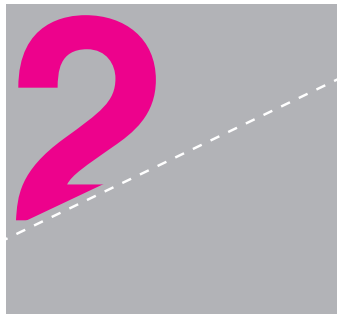
Do you have a great piece in your closet that you love to wear? Ready for an updated version? With your Brother™ Project Runway™ *Limited Edition* PC-420PRW, you can turn that old favorite into a new one! I have chosen a great thrift store sweater to revamp. I love the fit and look of the piece, but I needed a fresh take on this vintage find. Check out just one way to turn those favorites and thrift store finds into fashion gold!

MATERIALS: Brother™ Project Runway™ *Limited Edition* PC-420PRW, sweater, pattern paper, thick marker, scissors and thread.

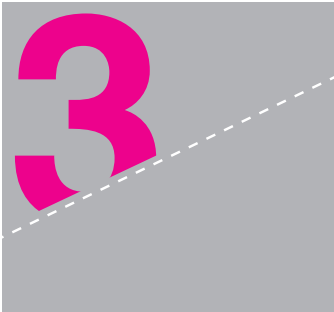


Find an old sweater you love.

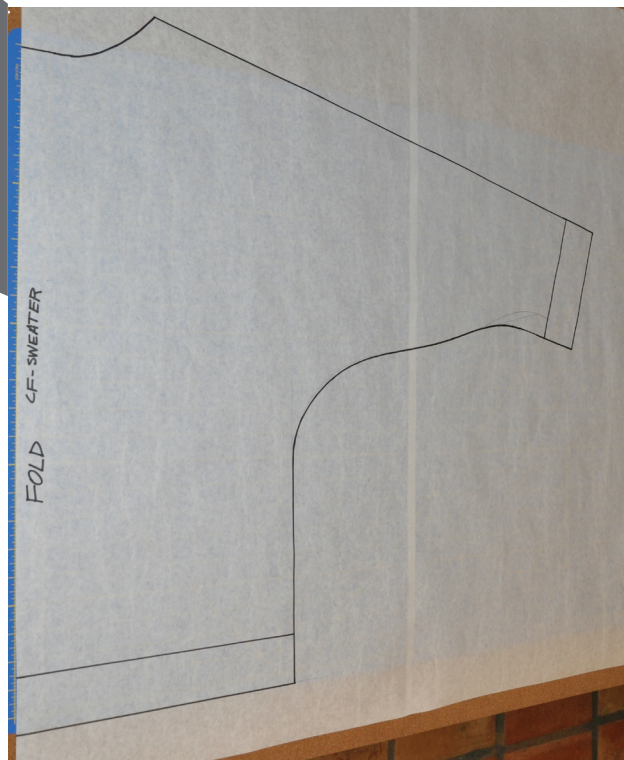


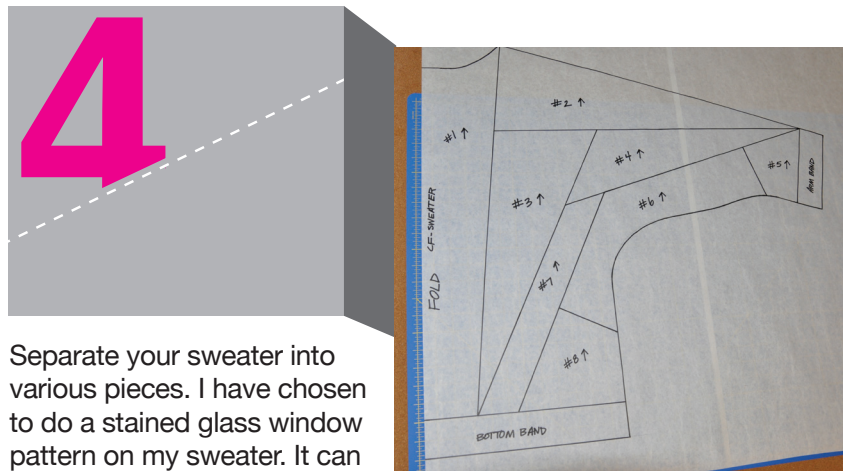


Lay half the sweater on your pattern paper with the center front of the sweater on the edge of your paper.

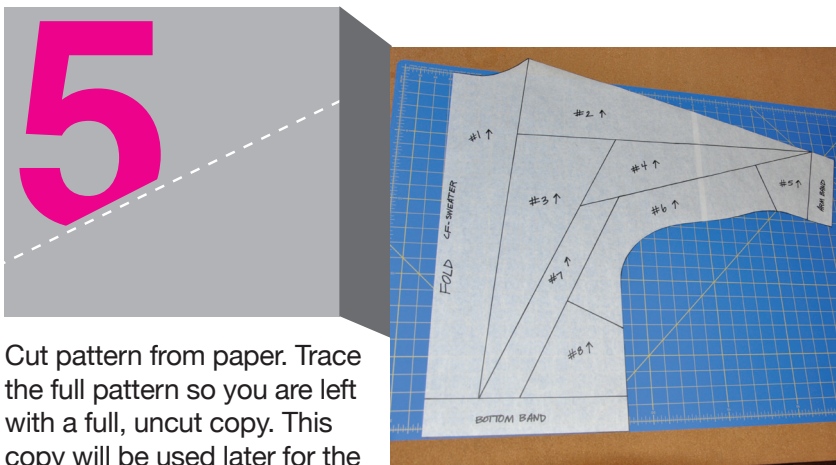


Trace the edge of the sweater and mark the width of the waistband and wristband.

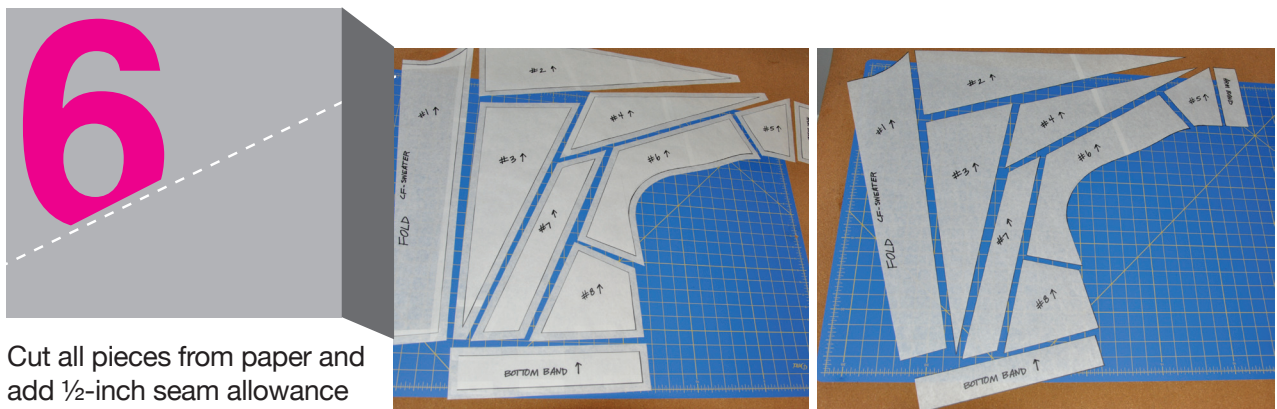




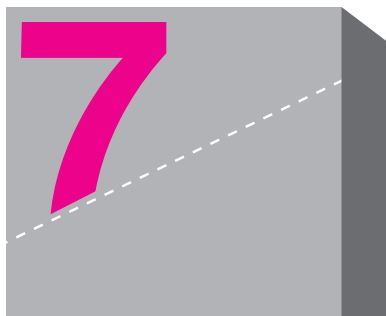
Separate your sweater into various pieces. I have chosen to do a stained glass window pattern on my sweater. It can be as random or symmetrical as you like. You can also choose to make it as simple or as intricate as you like. Just make sure to number the pieces and draw a diagram of the pieces if needed.



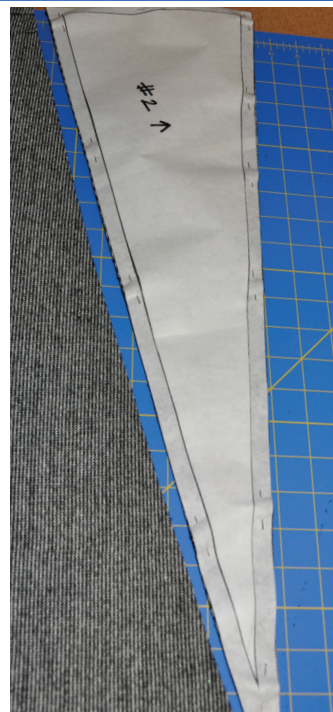
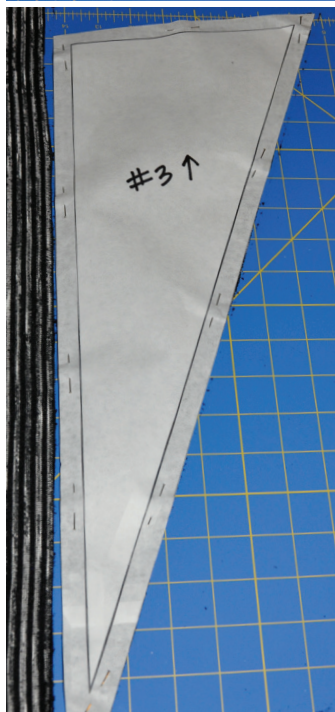
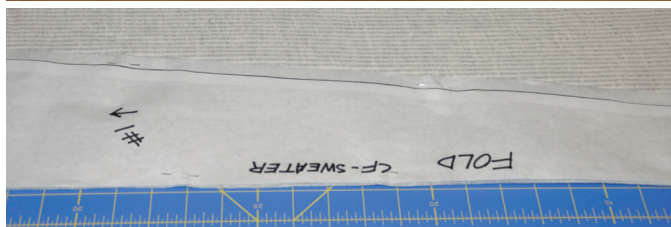
Cut pattern from paper. Trace the full pattern so you are left with a full, uncut copy. This copy will be used later for the back pattern of the sweater.

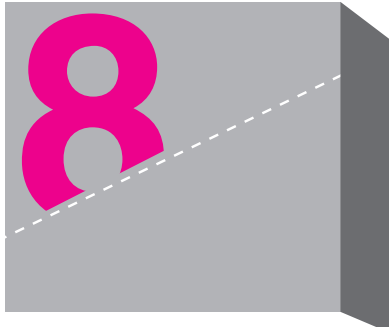


Cut all pieces from paper and add 1/2-inch seam allowance to all sides of pattern pieces.

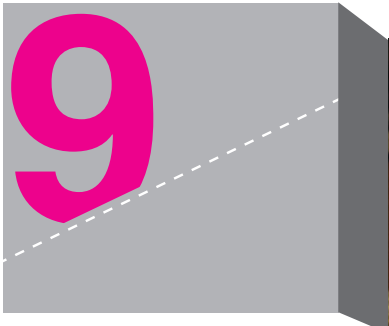


Using your chosen fabrics, cut pattern pieces from the fabric on the fold. You should be left with two pieces per pattern piece. Your choice of fabrics can be as bold or muted as you like. I have chosen to do different textures and patterns of black, grey, and cream.

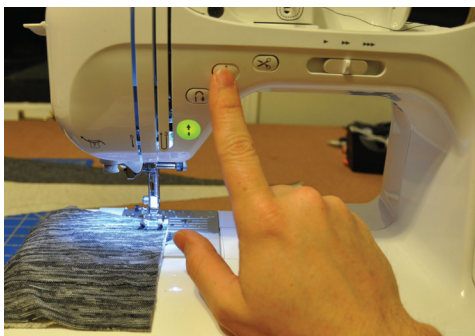




Lay all pattern pieces back out to get an idea of what your sweater will look like –this helps with the sewing process. You can also determine if the chosen fabrics work for your design and if you would like to change any before sewing.



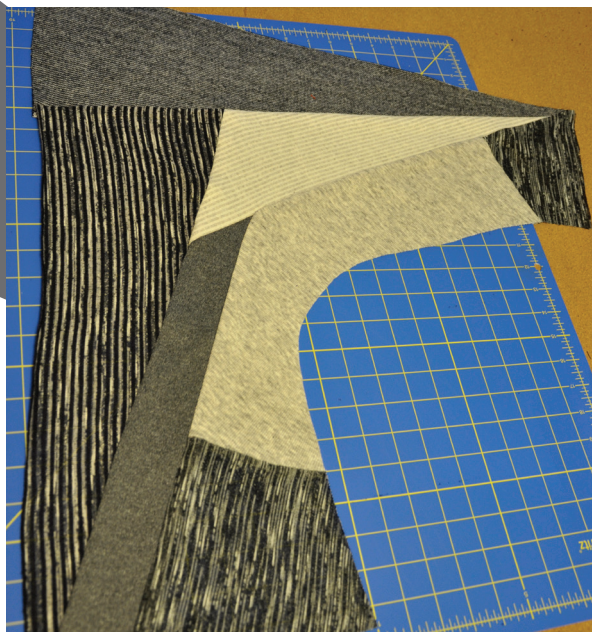
Taking one side of the sweater, start sewing the pieces back together. I have chosen the *My Custom Stitch™* feature in order to create a straight stitch that tightens and loosens as it sews to make it easier for me to sew the knit on the machine. It also allows for more stretch when putting the sweater on. In order to finish the seams on the inside, I have chosen an overcast stitch. You can use many of the utility stitches offered by the machine, but I would recommend stitches 7 through 16 in your manual.





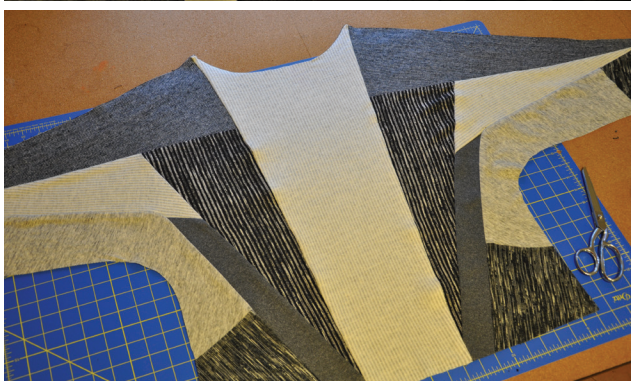
10

You should be left with half of one side of your sweater. Repeat "Step 9" to obtain the second side of your sweater. As you will see, both sides of my sweater are attached to the center panel, which is cut on the fold of the fabric.



11

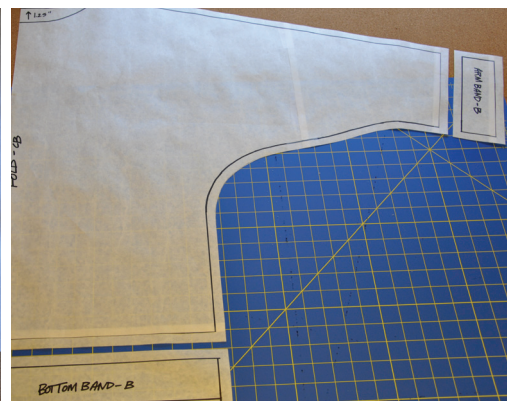
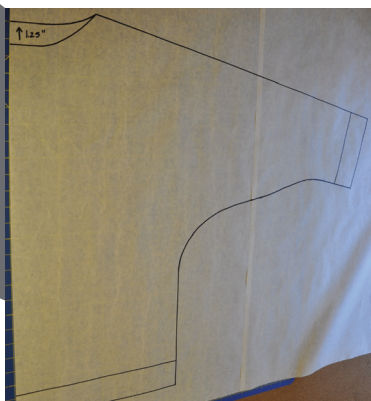
Sew both sides of your sweater to your center panel to complete the entire front of your sweater.





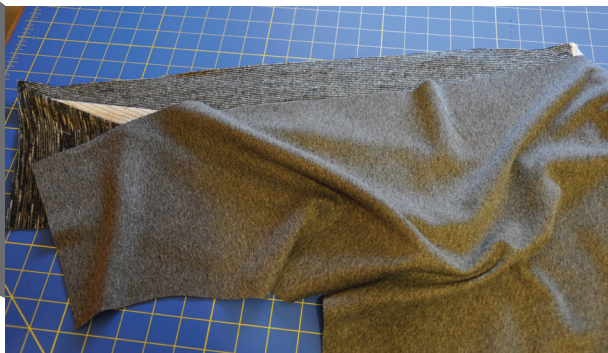
12

Next, take your copy of the pattern front and raise the neckline 1 1/4 inches. Separate the bottom waistband and wristband from the pattern and add 1/2-inch seam allowance to all pattern pieces. Place your pattern piece on the fold of your fabric and cut 1/4 inch.



13

With the right sides of the fabric together, pin the front of your sweater to the back of your sweater, matching the shoulder lines and side seams. Sew together.



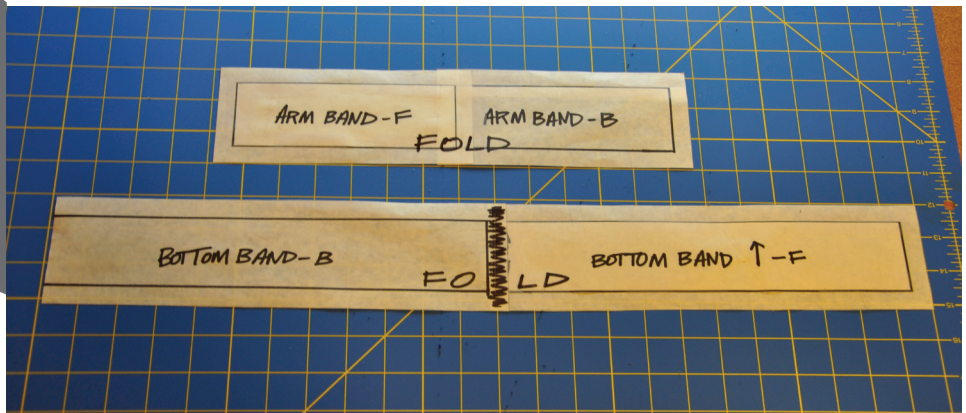


14

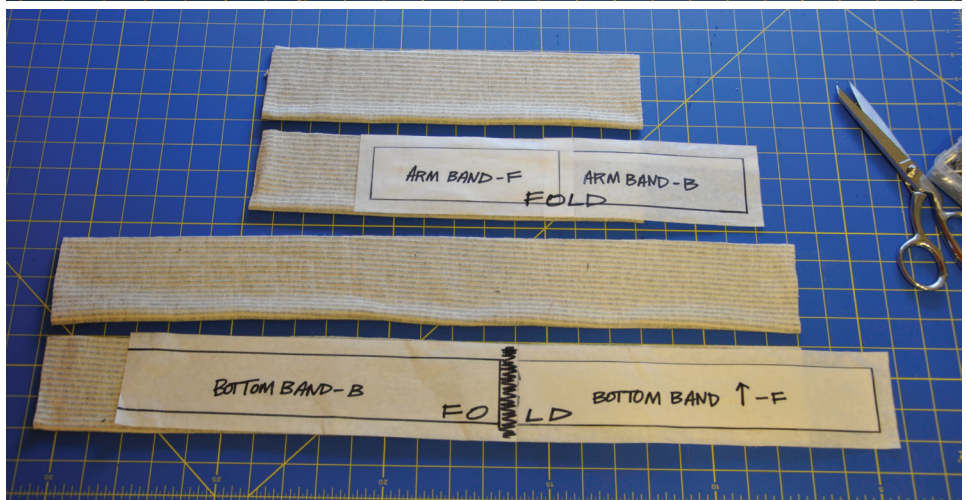


Now you should be left with a finished sweater (minus the finishing work for the neckline, hem, and wrists).

15



Now, take your front and back waistband patterns (overlapping them at the side seams on the seam allowance), and tape together. You should be left with one pattern piece. Repeat this step with your wristband pattern pieces. Next, place the pattern pieces on the fold of your desired fabric and cut two per pattern piece, leaving you with two waistband and two wristband fabric pieces.





16

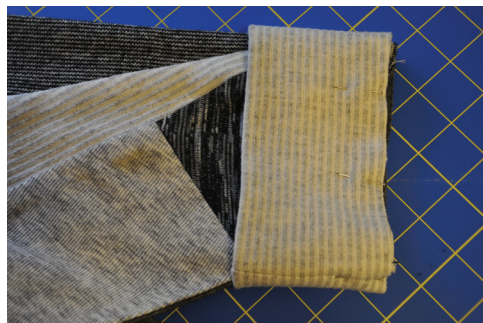
Taking your two waistband fabric pieces, sew together at side seams as shown in pictures. Next, fold the wrong sides of the fabric together, creating a finished waistband.



17

Pin the waistband to the bottom of your sweater, matching seams to the side seams of the sweater. Sew together. I have chosen to use a zigzag stitch to attach my waistband





Repeat "Step 17" for both wristbands.

You are now left with a fresh version of your old favorite sweater! This is a great project to do with many of your old favorites or even for those great thrift store finds. Turn your old into something new with the Brother™ Project Runway™ Limited Edition PC-420PRW!



(This project was created from the designer's perspective.)

done