

US 1-(888) 780-1685

Support:

info@phantomgogo.com

Hours of Operation:

Monday - Friday, 10am-4:30pm



Made in China

 **PHANTOM** GO GO 

R11 **ELECTRIC**
SCOOTER

RIDING GUIDE

IMPORTANT, RETAIN FOR FUTURE

REFERENCE: READ CAREFULLY

TABLE OF CONTENTS

R1 Specifications	2
Product Configuration	3
Controller Set-Up	4
Packaging	5
Assembly	6
Charging	7
Charging & Battery Safety Tips	8
Usage of the R1 Scooter	9
Safety Information	10
Care & Maintenance	12
Warranty	13

- Please take a clear and focused picture of the bike damage or the box as delivered.
- If the bike is to be returned:
 - Please return the bike in the original box with packaging and delivery documents.
 - Please return the charger and keys.
 - Please do not dismantle the bike components - as best as possible, please try to repackage the bike carefully to help minimize the potential for any additional unforeseen damage during return shipping.

Contact Customer Support:

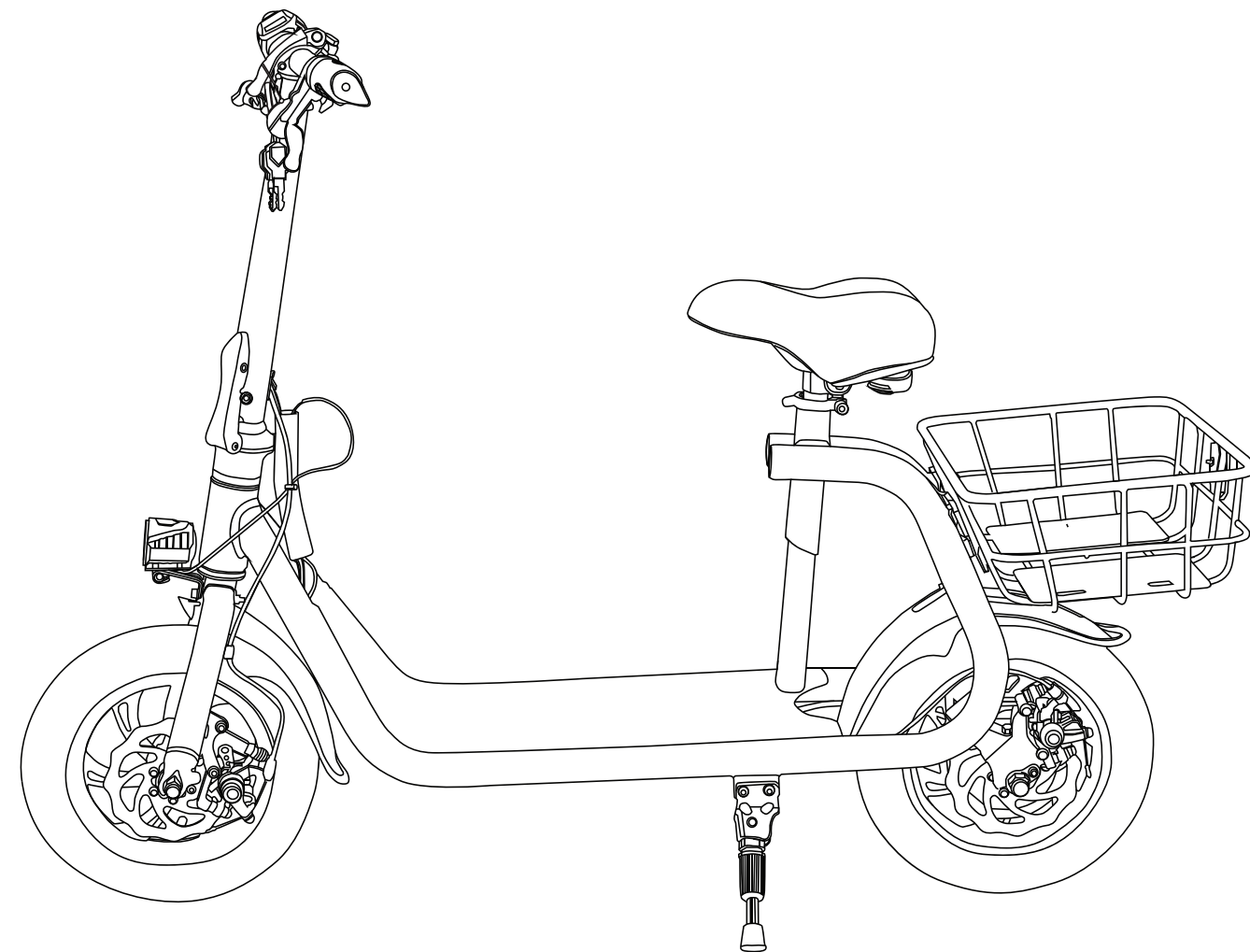
Customer Service will help determine the best possible remedy to resolve the issue with you, and they will instruct you regarding the repair or replacement of the bike:

Please contact the Phantomgogo Customer Service team Mon-Fri: 10am-4:30pm PST

- Phone: 888-780-1685
- Email: info@phantomgogo.com

PRODUCT CONFIGURATION

Item	Description
Frame	Aluminum Alloy
Battery voltage	8Ah
Max range	20 miles
Max speed	15.5 mph
Net weight	35.5lbs
Max load	265 lbs
Climbing angle	7.2 degrees
Screen	LCD Battery Indicator
Tire size	12" Front & Rear
Brakes	Front & Rear Discs
Unit unfolded size:	48.5" x 23" x 37.5"
Unit folded size:	48.5" x 10" x 23"
Charger:	AC100-240V/50-60hz
Motor Power:	450W
Battery	36V 8Ah Li Battery



Note: Above data is measured on an average of combined factors consistent with weather and temperature, road environment, load size, etc. that will directly affect the running mileage.

CARE & MAINTENANCE

Storage

- Avoid storing the scooter in direct sunlight. Hot temperatures can cause damage to the battery and function of the scooter.
- Avoid storing electric scooter in wet conditions.
- When the scooter is not being used, the battery can lose power. You should test the battery at least once a month, to ensure the battery maintains full charging capabilities.
- Avoid leaving the scooter [and battery] idle for long periods of time, as this can cause battery failure.
- In winter, the batteries may lose power faster because of low temperatures.
- Inappropriate storage can shorten the life of the lithium battery life or cause other mechanical problems. Please store the electric scooter indoors in a cool and dry place.

Cleaning

Before cleaning, make sure the scooter is turned off, unplug the charging line and cover the charging port. During the cleaning process, be careful keep the water and moisture out of charging port. Use a dry cloth or a damp cloth to clean the cables - do not spray water on the scooter or battery. During the cleaning process, be careful to keep water out of the charging port. Do not immerse the electric scooter in water as it will cause permanent damage.

Battery Recycling

Help keep the environment free of litter and harmful pollution by recycling the battery correctly - do not throw batteries in the trash - please recycle your battery responsibly. Please consult your local sanitation department guidelines for safe disposal of batteries and parts.

Tire Maintenance

Make sure the pressure of the two tires inflated correctly - do not overinflate tires and try to keep the two tires at the same pressure. The default tire pressure both tires is 36/PSI. It is recommended that any flat tries be changed by an experienced bicycle shop mechanic.

Ride Within Your Limits!

Take it slow until you are familiar with your local riding conditions. Be especially careful in wet conditions as traction can be greatly reduced and brakes become less effective. Never ride faster than conditions warrant or beyond your riding abilities. Remember that alcohol, drugs, fatigue, and distractions can significantly reduce your ability to make good judgments and ride safely.

Do not use your mobile phone when riding – this can cause you to be distracted – stay alert!

Make Sure Your Scooter is Well-Maintained

Follow the inspection and maintenance guidelines. Check critical safety equipment before every ride.

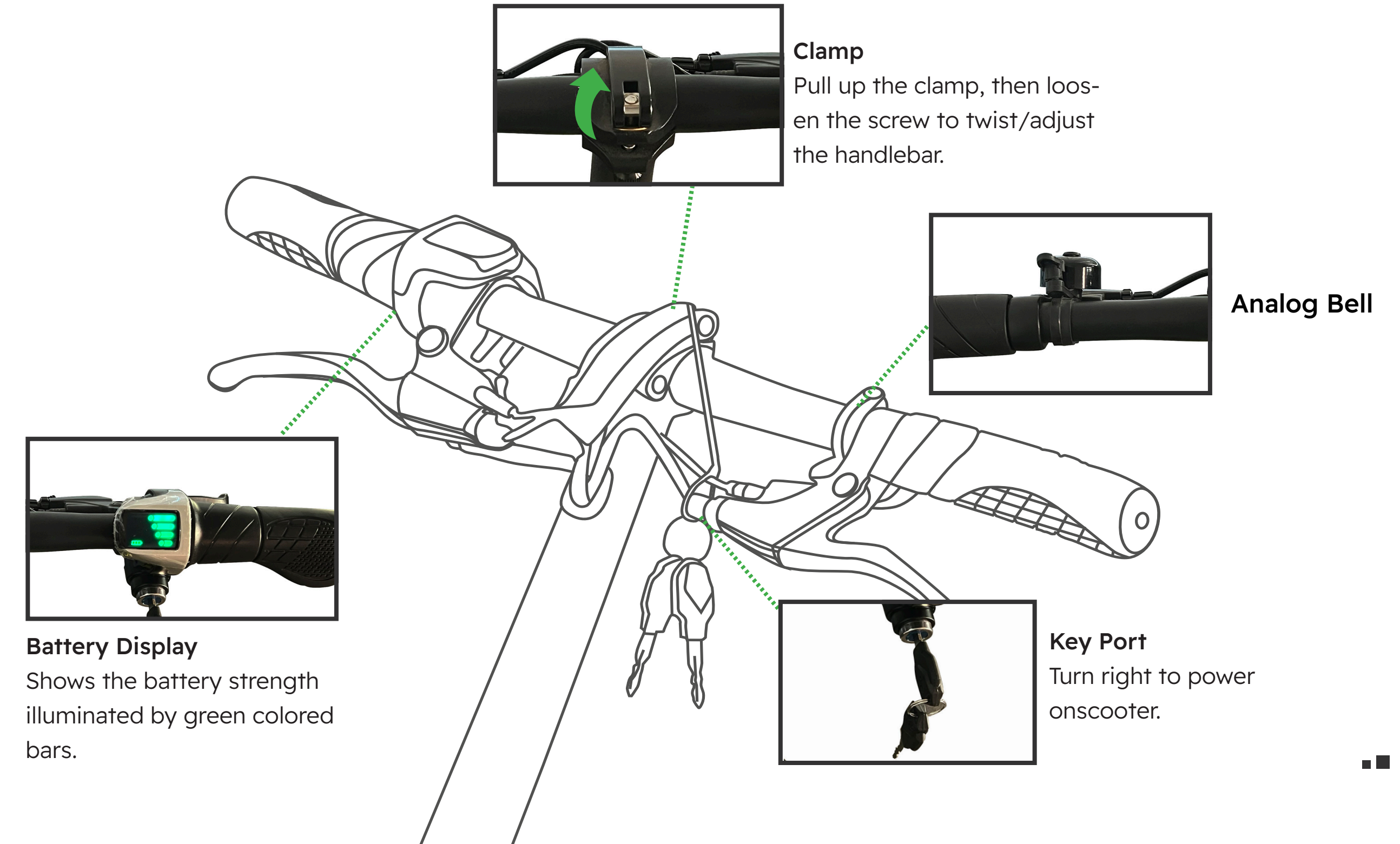
Know the Law

Cyclists are required to follow the rules of the road. Additionally, some communities regulate the use of motorized vehicles with minimum age, requirements and necessary equipment. Check with your local police department for specific details.

Off-road Riding

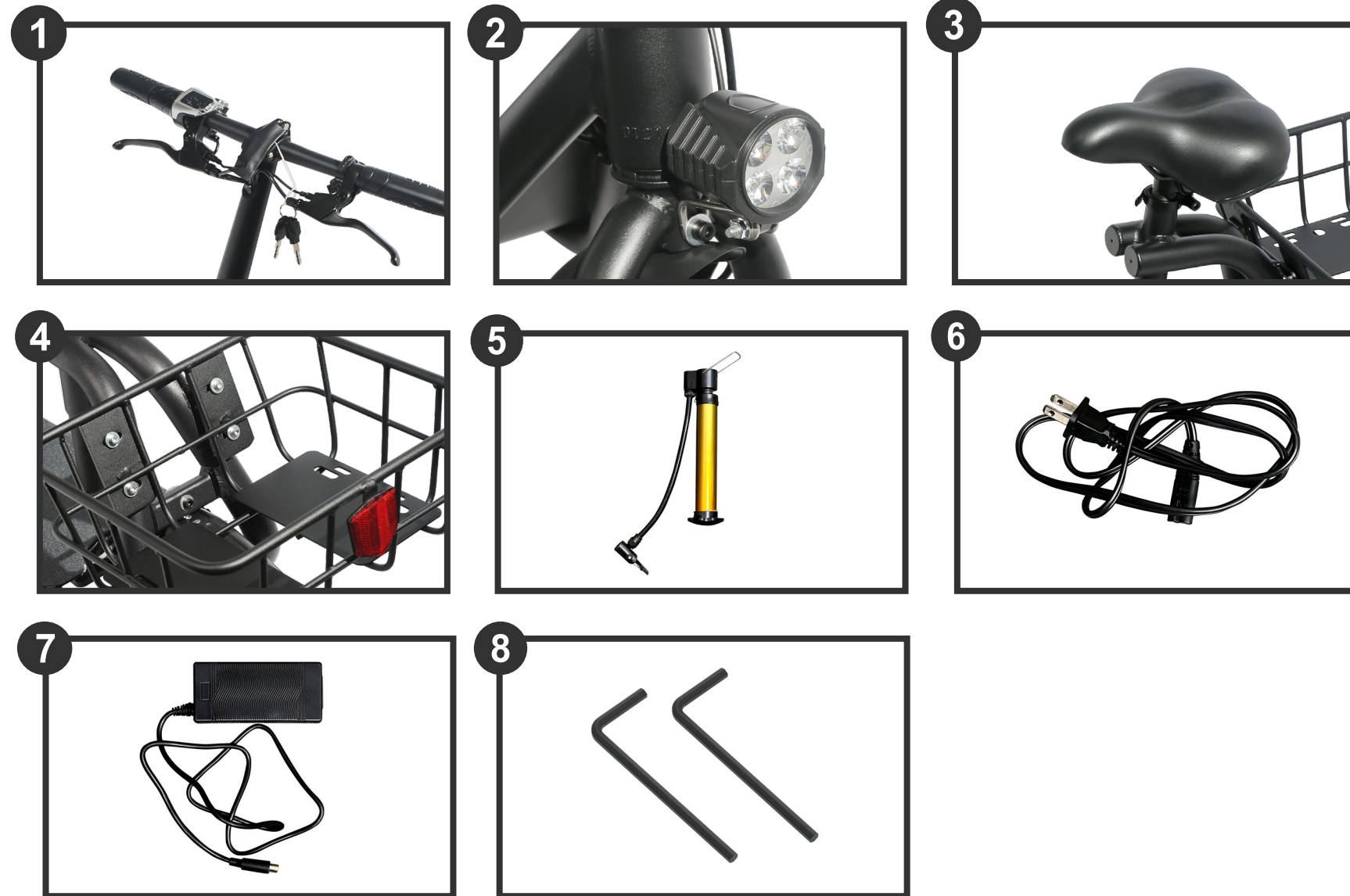
Off-road riding is not recommended as the scooter tires are for street-use only. Dust and extreme impacts from off-road riding can cause electrical system problems.

CONTROLLER SET UP



PACKAGING

1. Controller
2. Headlight
3. Seat
4. Basket
5. Air Pump
6. Charger Cable
7. Charger
8. Tools



SAFETY INFORMATION

Your electric scooter can provide many years of service and fun – if you are safe and responsible when riding.

Always Wear a Helmet

Helmets significantly reduce the number and severity of head injuries. Always wear a helmet that complies with your local and state laws when riding the R1 or any electric bicycle for that matter. Check with your local police department for requirements in your community. **DO NOT** wear loose fitting clothing as they can get tangled in the moving parts of the electric scooter. Wear close-toed shoes. Always wear a helmet and appropriate apparel when riding. If you are unsure, check with your local state laws concerning other protective gear that may be required when riding the electric scooter.

Know Your R1 ELECTRIC Scooter

Your new R1 Scooter incorporates many features and functions that you may not be familiar with. Read this manual thoroughly to understand how its features can enhance your riding experience.

Ride Defensively!

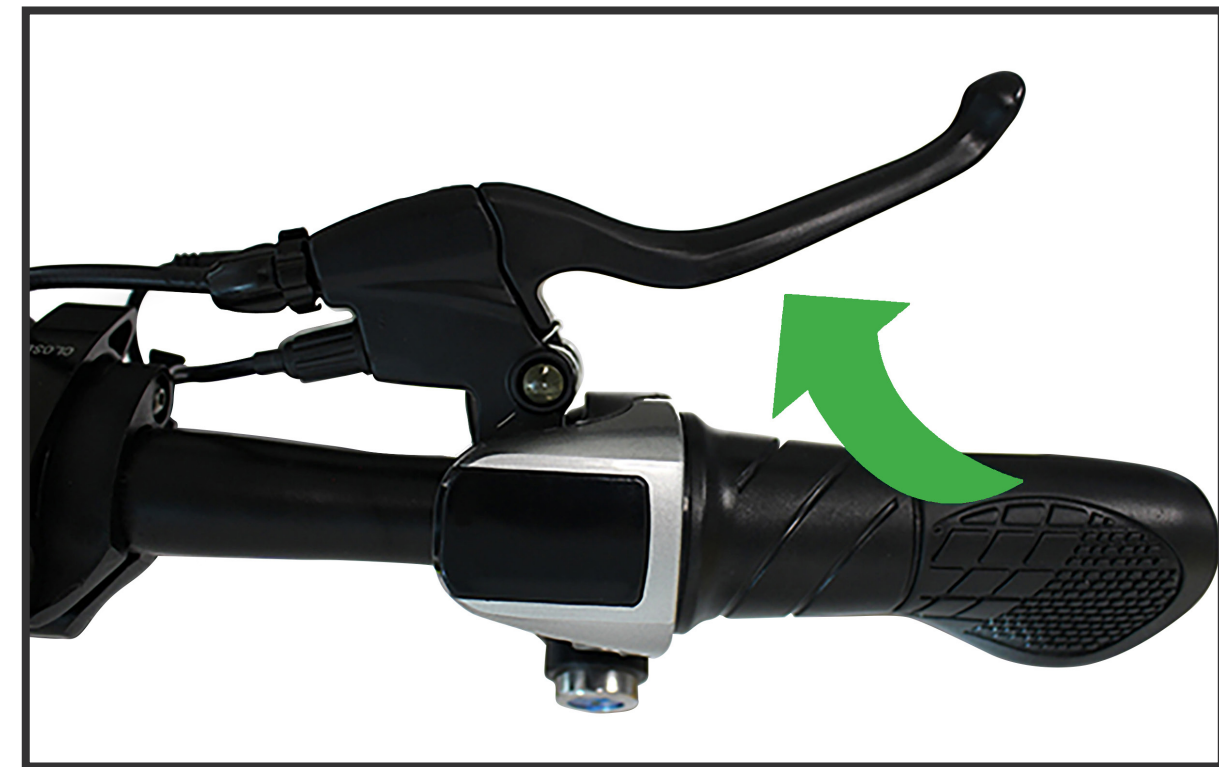
One of the most frequent cycling accidents occurs when the driver of a parked car opens his door into a rider's path. Another common occurrence is when a car or another cyclist moves suddenly into your path. Always be aware of vehicles around you. Do not assume that surrounding drivers or pedestrians see you. Be prepared to take evasive action or stop suddenly.

Make Sure You Are Visible to Others!

Make yourself more visible by wearing bright reflective clothing. Keep your reflectors clean and properly aligned. Use your headlight in reduced lighting conditions. Signal your intentions so that drivers and other cyclists can anticipate your actions. Use your bell when needed to make your presence known.

USAGE OF THE R1 SCOOTER

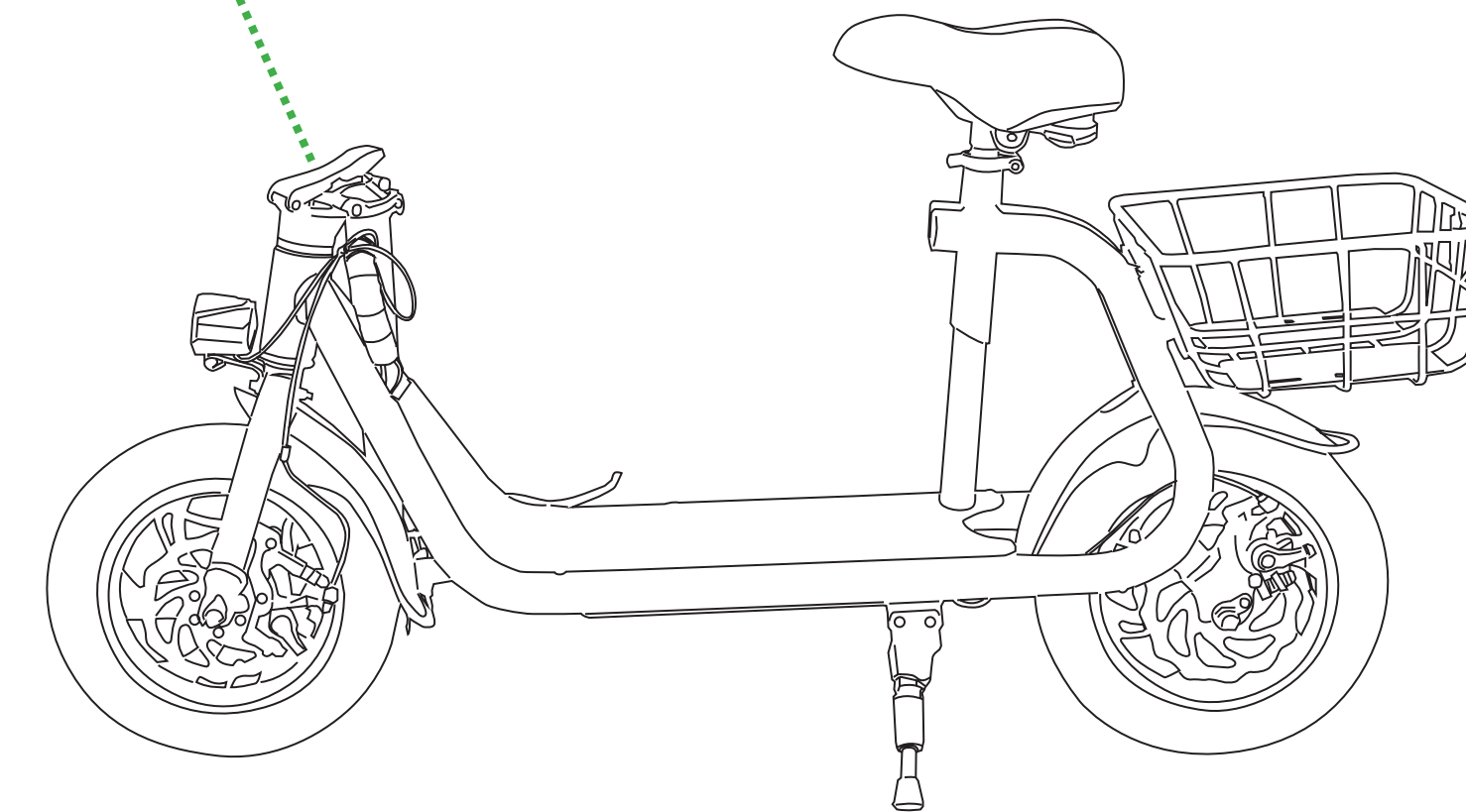
- The R1 is a one-person mobility product – anyone who is under 12 years old needs to be assisted when riding.
- The R1 is only for daily recreational use and is not designed for extreme sports.
- Check that the parts of the scooter are installed correctly and not damaged.
- Check that folding mechanism is locked.
- Check the battery – is the battery charged?
- Check the brakes – do they function for both front and rear wheels?
- Check the tires – make sure there are no punctures or bubbles.
- Ride with caution and always wear a helmet.
- Make sure to follow maintenance protocols. Lack of proper maintenance may void warranty.



Handbrakes

Squeeze each brake slowly to avoid stopping abruptly and losing control.

ASSEMBLY



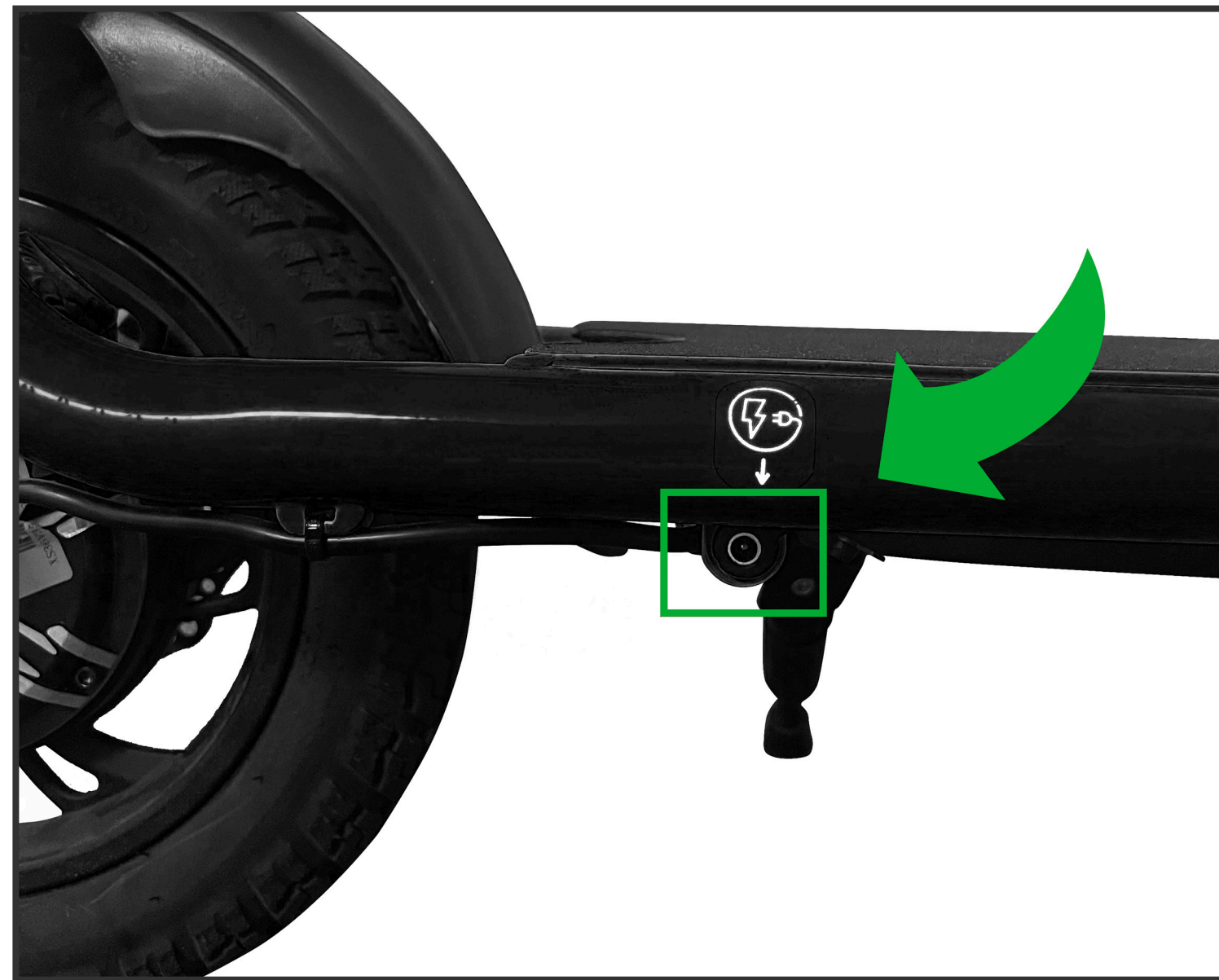
Hold the folding handle tightly, swing the bar upward until the downtube connects with the frame tube, then squeeze the quick release handle towards the tube until it is locked in place.

WARNING: DO NOT POWER ON WHILE CHARGING

CHARGING

- The charging port is located under the R1 baseboard.
- Plug the charging cable into the charging port.
(Make sure the connection is dry)
- The indicator LED of the charging adapter turns red when charging and turns green when the battery is full. Please stop charging when it is full to prevent battery life from deteriorating. Please use the batteries, chargers and cables supplied by the original manufacturer to prevent the battery from being overcharged.
- When finished charging, close the charging flap to prevent any damage to the port.

WARNING: UN-PLUG BEFORE TURNING ON IGNITION.



Note: Please be sure to keep the port covered and free of dirt and water.

CHARGING & BATTERY SAFETY TIPS

WARNING: The R1 is not waterproof, and therefore should always be kept away from any source of water – NEVER allow the charging block, cables or cable ends to touch water. Do not handle with wet hands as it may cause electric shock. If any failure occurs during charging, unplug immediately. Do not yank or pull on the plug to the R1 or pull from an electrical socket in an abrasive manner.

- Check battery level before the first use.
- It is recommended that the battery be recharged after each use.
- To maximize the battery life, please charge once per month or after at least 2 days of operation.
- Recharge the battery pack at least once per month as all batteries of every type will slowly discharge energy when left idle for extended periods of time.
Try to keep the battery from being exposed to excessive heat or very hot temperatures.
- Please use the batteries, chargers and cables supplied by the original manufacturer to prevent the battery from being overcharged.
- Do not allow the charger or cable to contact sharp or hot items.
- Perform a visual inspection of the charger and charging cables regularly.
- If the charging cable has obvious damage – do not use the charger to avoid injury or electrical damage.
- Please do not repair the battery, the charger, or the cable independently.
- Please ensure that the charger and charging cables are connected correctly and are free of dust, dirt, and water.
- Prolonged exposure to UV rays, rain and elements may damage the enclosure materials, store indoors when not in use.
- The charging range and use range are 0° - 40°C.
- Please do not disassemble parts by yourself.

Please contact us if you experience any problems or issues.