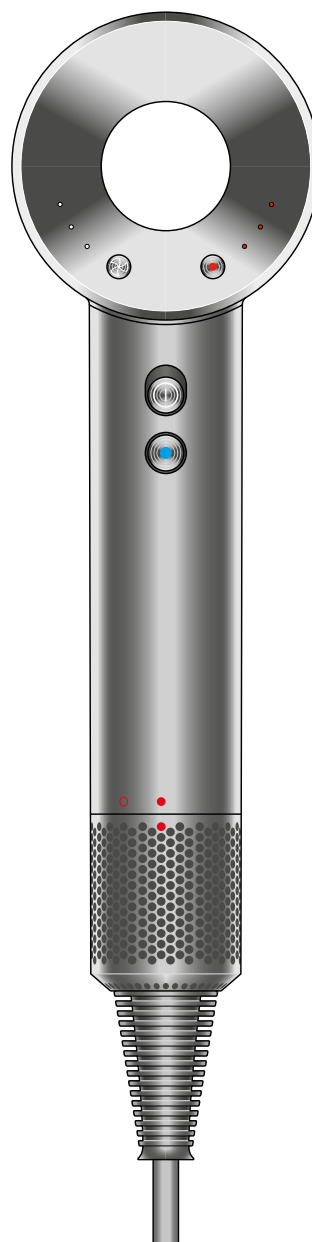


# dyson supersonic

Dyson supersonic logo

## User manual



SV12 JN.00000 PN.000000-00-00  
00.00.00 VERSION NO.01

---

In the box

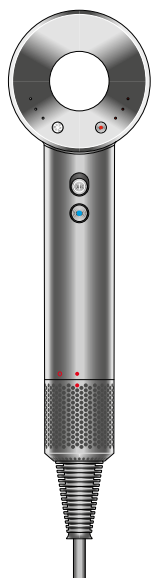
Getting started

LEDs

Using your hair dryer

Regular filter cleaning

# In the box



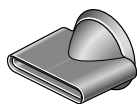
View of the back of the Dyson Supersonic hairdryer showing the flow button on the left and the temperature button on the right. The power button and cold shot buttons shown on the handle. The filter cage located at the bottom of the handle.

Dyson Supersonic™ hair dryer

---

Some attachments may not be included.

You can buy additional attachments at [www.dyson.com](http://www.dyson.com).



Styling concentrator

Attachment with flat, wide nozzle.



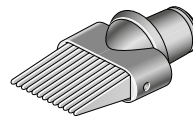
Gentle air attachment

A flat nozzle with a rippled texture.



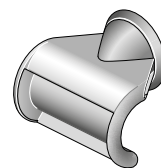
Diffuser

A large, wide, circular nozzle with prongs on the inner surface.



Wide-tooth comb

An attachment with long straight comb prongs.

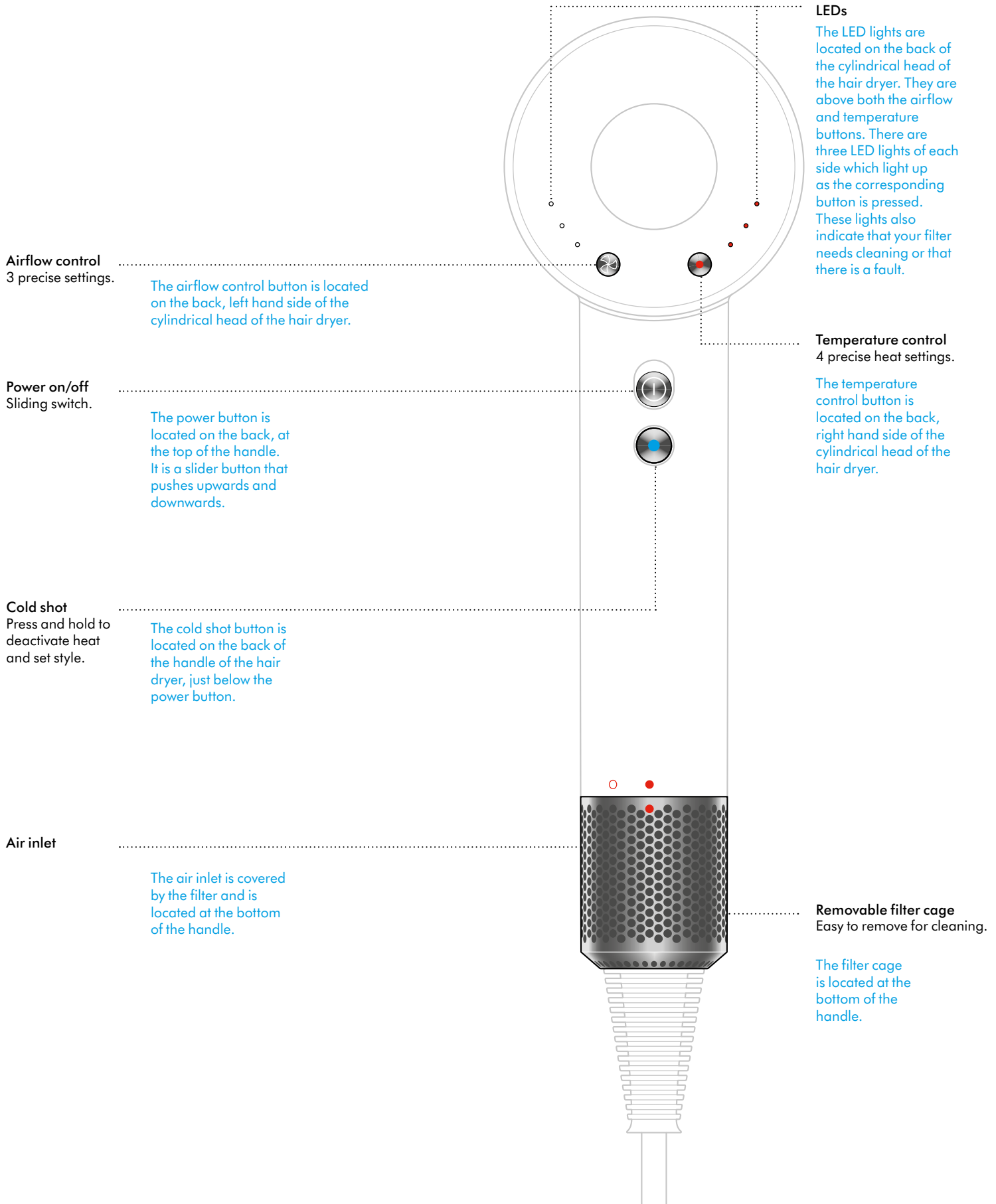


Flyaway attachment

A flat, hook-shaped nozzle.

# Getting started

View of the back of the Dyson Supersonic hairdryer showing the flow button on the left with LED lights and the temperature button on the right, also with LEDs. The power button and cold shot buttons shown on the handle.



# LEDs

## Settings

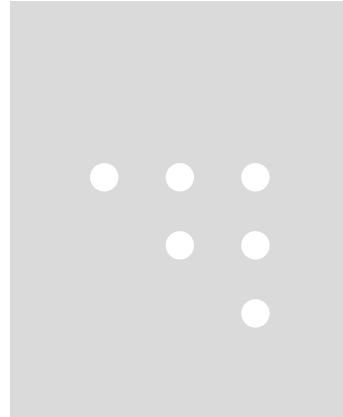
The LED lights indicate which settings you are using.

### Flow

Three white LEDs illuminated

Two white LEDs illuminated

One white LED illuminated



Fast

Medium

Gentle

## Temperature

Maximum operating temperature in normal working conditions: 221°F.

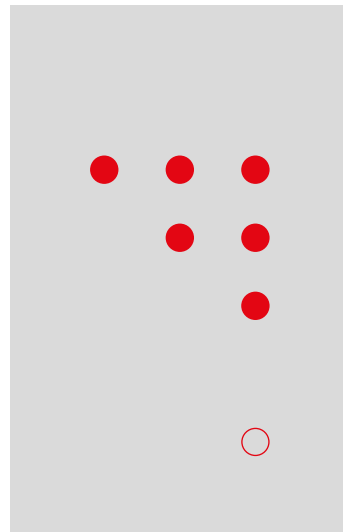
Maximum thermistor temperature at safety shut down: 293°F.

Three red LEDs illuminated.

Two red LEDs illuminated.

One red LED illuminated.

No red LED



High

Medium

Low

Cool

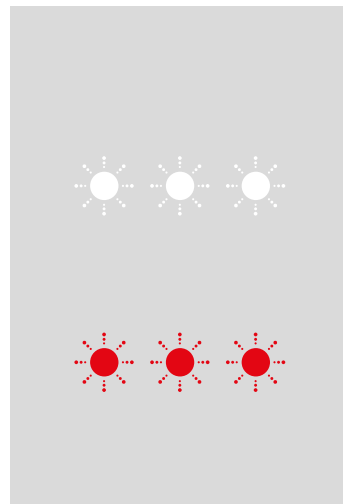
## Diagnostics

The LEDs will flash continuously to let you know that your machine needs attention.

Clean the filter. Follow the instructions or watch the video at [dyson.com/yoursupersonic](https://www.dyson.com/yoursupersonic).

If all three red lights continue to flash, contact the Dyson Helpline.

Don't turn back on.



Three flashing white LEDs.

Three flashing red LEDs.

# Using your hair dryer

Your Dyson Supersonic™ hair dryer has magnetic styling attachments, for easy fitting and rotation during styling.

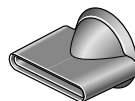
Remove your attachments using the cool edges.

Heat Shield technology keeps the surface of your styling attachments cool.

---

## Styling concentrator

Wide and thin for precision styling.



Attachment with flat, wide nozzle.

## Diffuser

Even diffusion to help define curls and reduce frizz.



A large, wide, circular nozzle with prongs on the inner surface.

## Gentle air attachment

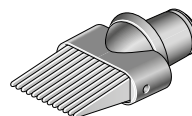
Cooler, gentle drying for fine hair and delicate scalps.



A flat nozzle with a rippled texture.

## Wide-tooth comb

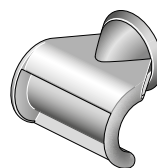
Engineered for curly and coily hair. Lengthen hair completely, or tease out curls just a little bit.



An attachment with long straight comb prongs.

## Flyaway attachment

For a smoother finish. Attracts longer hairs and hides flyaways using the Coanda effect. For use only on dry and straight(ened) hair.



A flat, hook-shaped nozzle.

# Regular filter cleaning

Check your filter is clear from hair product residue and debris monthly, or when the LED lights alert you.

## Maintaining performance

Unplug your machine from the mains electricity supply and allow to cool down before cleaning your filter.

The Dyson Supersonic™ hair dryer has highly tuned technology to give outstanding performance.

This technology needs to be kept free from dust and hair product residue. Maintenance is required to maintain performance.

### Step 1

Hold the handle of your machine firmly and gently rotate the filter cage counter-clockwise.

### Step 2

Pull down and away from the machine. Use a lint-free cloth or soft brush to remove any dust or debris from both the filter cage and the filter mesh.

### Step 3

Don't use water to clean the filter mesh.  
Don't apply too much pressure to the filter mesh.

### Step 4

Rotate the filter cage back into position until correctly aligned.

Rotate clockwise to lock before use.

