



**Free Crochet Pattern  
Lion Brand® Hometown™  
Curl-Up Kitty Cat Bed  
Pattern Number: L50154**



[Click here to go behind the scenes of this photoshoot!](#)



# Free Crochet Pattern from Lion Brand Yarn

## Lion Brand® Hometown™

### Curl-Up Kitty Cat Bed

Pattern Number: L50154

**SKILL LEVEL:** [Easy \(Level 2\)](#)

**SIZE:** One Size

**Finished Circumference at Base** About 46 in. (117 cm)

**Finished Height** About 6 in. (15 cm)

**CORRECTIONS:** None as of Jul 4, 2016. To check for later updates, click [here](#).

#### MATERIALS

- 135-149 [Lion Brand Hometown™ Yarn: Dallas Grey](#)  
6 Balls (A)
- 135-111 [Lion Brand Hometown™ Yarn: San Diego Navy](#)  
2 Balls (B)
- 135-159 [Lion Brand Hometown™ Yarn: Madison Mustard](#)  
2 Balls (C)
- 135-136 [Lion Brand Hometown™ Yarn: Portsmouth Pumpkin](#)  
1 Ball (D)
- [Lion Brand Crochet Hook - Size J-10 \(6 mm\)](#)
- [Lion Brand Split Ring Stitch Markers](#)
- [Lion Brand Large-Eye Blunt Needles \(Set of 6\)](#)

*\*Hometown™ (Article #135). Solids, Multis, Neons and Twists: 100% Acrylic, Tweeds: 94% Acrylic, 6% Rayon; package size: Solids: 5 oz. (142 g), 81 yd. (74 m) Multis, Tweeds, Neons, and Twists: 4 oz. (113 g), 64 yd. (59 m)*



#### GAUGE:

11 sc + 12 rnds = about 4 in. (10 cm).

When you match the [gauge](#) in a pattern, your project will be the size specified in the pattern and the materials specified in the pattern will be sufficient. The needle or hook size called for in the pattern is based on what the designer used, but it is not unusual for gauge to vary from person to person. If it takes you fewer stitches and rows to make your swatch, try using a smaller size hook or needles; if more stitches and rows, try a larger size hook or needles.

[Making a Gauge Swatch](#)

#### STITCH EXPLANATION:

**sc2tog (sc 2 sts together)** (Insert hook in next st and draw up a loop) twice, yarn over and draw through all 3 loops on hook – 1 st decreased.

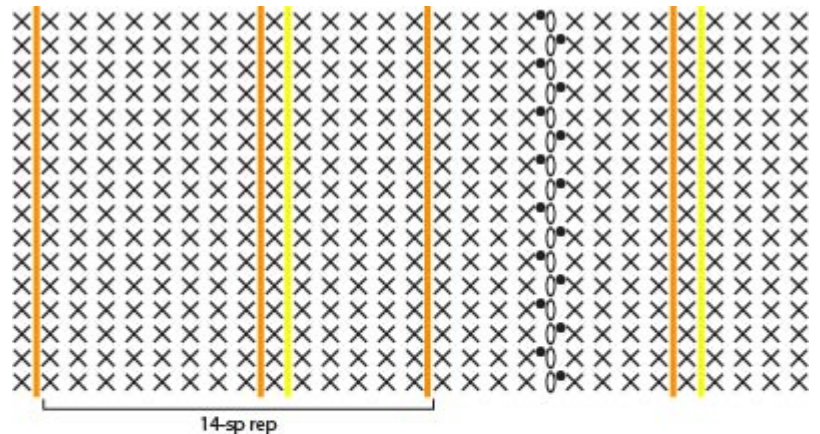
#### TECHNIQUE EXPLANATION

##### Surface Slip Stitch

1. Make a slip knot, but do not place it on hook.
2. Insert hook from RS to WS through space between sts (specific spaces are indicated on the Diagram).
3. Place the slip knot on hook and draw loop to RS (keep beg tail and working yarn on WS).
4. \*Insert hook from RS to WS through next vertical space, yarn over, draw loop through loop on hook (surface sl st made); rep from \*.
5. To end a line of surface sl sts, remove hook from loop. Insert hook from WS to RS of piece, replace loop on hook and draw loop through to WS. Cut yarn, draw yarn tail through loop to fasten off.

## NOTES:

1. Bed is worked in in one piece in the round.
2. Base is worked in continuous rnds (spiral). Sides are worked in joined and turned rnds. The yarn color is changed to make stripes on the sides of the Bed.
3. Vertical lines of surface sl st are worked on the sides of the Bed, following a diagram for color and placement.
4. To change yarn color when joining a rnd, insert hook in first st of rnd. Yarn over with new color and draw through all loops on the hook (joining sl st made). Fasten off old color.
5. Sides are folded to the inside of the Bed. This will help the sides maintain their shape.
6. Liner is worked separately in continuous rnds, making it removable for easy washing.
7. We used a smaller hook and tighter gauge than usual for this yarn to make a sturdy Bed.



KEY	
●	= slip stitch (sl st)
○	= chain (ch)
X	= single crochet (sc)
—	= surface sl st worked with D
—	= surface sl st worked with C

## BED

### Base

With A, ch 3; join with sl st in first ch to form a ring.

**Rnd 1 (RS of Base):** Ch 1, work 6 sc in ring; do not join. Place marker in last st made to indicate end of rnd. Move marker up as each rnd is completed.

**Rnd 2:** Work 2 sc in each st around – you will have 12 sc at the end of this rnd.

**Rnd 3:** (Sc in next st, 2 sc in next st) 6 times – 18 sc.

**Rnd 4:** (Sc in next 2 sts, 2 sc in next st) 6 times – 24 sc.

**Rnd 5:** (Sc in next 3 sts, 2 sc in next st) 6 times – 30 sc.

**Rnd 6:** (Sc in next 4 sts, 2 sc in next st) 6 times – 36 sc.

**Rnd 7:** (Sc in next 5 sts, 2 sc in next st) 6 times – 42 sc.

**Rnd 8:** (Sc in next 6 sts, 2 sc in next st) 6 times – 48 sc.

**Rnd 9:** (Sc in next 7 sts, 2 sc in next st) 6 times – 54 sc.

**Rnd 10:** (Sc in next 8 sts, 2 sc in next st) 6 times – 60 sc.

**Rnd 11:** (Sc in next 9 sts, 2 sc in next st) 6 times – 66 sc.

**Rnd 12:** (Sc in next 10 sts, 2 sc in next st) 6 times – 72 sc.

**Rnd 13:** (Sc in next 11 sts, 2 sc in next st) 6 times – 78 sc.

**Rnd 14:** (Sc in next 12 sts, 2 sc in next st) 6 times – 84 sc.

**Rnd 15:** (Sc in next 13 sts, 2 sc in next st) 6 times – 90 sc.

**Rnd 16:** (Sc in next 14 sts, 2 sc in next st) 6 times – 96 sc.

**Rnd 17:** (Sc in next 15 sts, 2 sc in next st) 6 times – 102 sc.

**Rnd 18:** (Sc in next 16 sts, 2 sc in next st) 6 times – 108 sc.

**Rnd 19:** (Sc in next 17 sts, 2 sc in next st) 6 times – 114 sc.

**Rnd 20:** (Sc in next 18 sts, 2 sc in next st) 6 times – 120 sc.

**Rnd 21:** (Sc in next 19 sts, 2 sc in next st) 6 times – 126 sc.

**Rnd 22:** Sl st loosely in each st around.

Remove marker, do not fasten off.

### Shape Sides

**Note:** On Rnd 1 of the sides, you'll be working into the sl sts of Rnd 22. You may find it helpful to change to a smaller hook to do this. Remember to change back to the larger hook before working Rnd 2 of the sides!

**Rnd 1 (RS):** With A, ch 1, TURN, sc in each sl st around; join with sl st in first sc.

**Rnd 2:** With A, ch 1, turn, sc in each st around; join with sl st in first sc and change to C.

**Rnd 3:** With C, rep Rnd 2 changing to B at end of rnd.

**Rnds 4-6:** With B, rep Rnd 2 three times changing to C at end of Rnd 6.

**Rnd 7:** With C, rep Rnd 2 changing to A at end of rnd.

**Rnds 8-12:** With A, rep Rnd 2 five times changing to C at end of Rnd 12.

**Rnd 13:** With C, rep Rnd 2 changing to B at end of rnd.

**Rnds 14 and 15:** With B, rep Rnd 2 twice changing to C at end of Rnd 15.

**Rnd 16:** With C, rep Rnd 2 changing to A at end of rnd.

**Rnds 17 and 18:** With A, rep Rnd 2 twice, do not change yarn color.

**Rnd 19:** With A, do not turn, sl st loosely in each st around; do not join to first sl st and do not change yarn color.

**Rnd 20:** With A, ch 1, turn, sc in each sl st around; join with sl st in first sc.

**Note:** Decreases are worked in Rnd 21 so that the inner sides will fit easily into the outer sides.

**Rnd 21:** With A, ch 1, turn, sc in first 4 sts, sc2tog, (sc in next 12 sts, sc2tog) 8 times, sc in last 8 sts ; join with sl st in first sc changing to C at end of rnd – 117 sc at the end of this rnd.

**Rnds 22-25:** Rep Rnds 13-16.

**Rnds 26-30:** With A, rep Rnd 2 five times changing to C at end of Rnd 30.

**Rnds 31-35:** Rep Rnds 3-7.

**Rnds 36 and 37:** With A, rep Rnd 2 twice.

Fasten off.

### LINER

With A, work same as Rnds 1-20 of Base.

Fasten off.

### FINISHING

#### Surface Slip Stitch

**Notes:** Vertical lines of surface sl st are worked with C and D onto sides of Bed.

Follow the Technique Explanation for how to work surface sl st and follow the Diagram for color and placement of vertical lines. The surface sl sts are worked into the spaces between sts from the base up to the top of the sides.

From RS, beg at Rnd 1 of side and working clockwise, sk 3 sps following sl st join. With D, work vertical surface sl st line in spaces between sts from Rnd 1 to Rnd 37 of side. Skip the next 4 sps, then with C, work a line of vertical surface sl sts from Rnd 1 to Rnd 37. Continue in this way, following chart to work remaining vertical lines of surface st sts.

#### Top Edging

**Note:** Top edging is worked into the sts of Rnd 18 of sides – you will be working below the sl sts of Rnd 19.

From RS, join A with an sc at join of Rnd 18 of sides. Work sc in each st of Rnd 18 to first D vertical line of surface sl st, skip the st at the top of this D line, sc in each st of Rnd 18 to next double line of surface sl st, ch 1, skip the sts at the top of these vertical double lines; continue to work in this way around to end of Rnd 18, join with sl st in first sc.

Fasten off.

Fold sides along edging to inside of Bed.

Weave in ends.

<b>ABBREVIATIONS / REFERENCES</b>	
Click for explanation and illustration	
<u>beg = begin(s)(ning)</u>	<u>ch(s) = chain(s)</u>
<u>rep = repeat(s)(ing)</u>	<u>rnd(s) = round(s)</u>
<u>RS = right side</u>	<u>sc = single crochet</u>
<u>sk = skip</u>	<u>sl st = slip stitch</u>
<u>sp(s) = space(s)</u>	<u>st(s) = stitch(es)</u>
<u>WS = wrong side</u>	

Learn to crochet instructions: <http://www.lionbrand.com/learn/how-to-crochet>

We want your project to be a success! If you need help with this or any other Lion Brand pattern, e-mail support is available 7 days per week. Just click [here](#) to explain your problem and someone will help you!

**For thousands of free patterns, visit our website [www.LionBrand.com](http://www.LionBrand.com)  
To order visit our website [www.lionbrand.com](http://www.lionbrand.com) or call: (800) 258-YARN (9276) any time!**

**When in New York City, visit the Lion Brand Yarn Studio where we have the largest selection of our yarns  
anywhere and over 100 classes and events monthly.  
34 West 15th Street, NY, NY 10011**

Copyright ©1998-2016 Lion Brand Yarn Company, all rights reserved. No pattern or other material may be reproduced -- mechanically, electronically, or by any other means, including photocopying -- without written permission of Lion Brand Yarn Company.