

**EPSON**<sup>®</sup>  
EXCEED YOUR VISION



## PowerLite<sup>®</sup> W16 3D WXGA 3LCD Projector

**3D**



**3x**  
Brighter  
Colors  
with  
Epson<sup>®</sup> Projectors<sup>1</sup>

### Bring lessons to life with engaging 3D content.

**3x Brighter Colors<sup>1</sup>, and reliable performance** — 3LCD, 3-chip technology

**One measurement of brightness is not enough** — look for both high color brightness and high white brightness. The PowerLite W16 has:

Color Brightness: 3000 lumens in 2D mode<sup>2</sup>

White Brightness: 3000 lumens in 2D mode<sup>2</sup>

**Captivating 3D content to engage any student** — standard 2D and active 3D projection (with active shutter glasses, sold separately) with Full HD technology

**Supports multiple 3D formats via HDMI<sup>3</sup>** — no external 3D converter box necessary

**Easy setup and great positioning flexibility** — automatic horizontal and vertical keystone correction, Quick Corner<sup>®</sup> and Screen Fit

**Versatile connectivity for any classroom** — HDMI, computer/VGA inputs, monitor output, audio input, audio output, USB and RS-232c



# PowerLite® W16 3D WXGA 3LCD Projector

## Bring lessons to life with engaging 3D content.

Brighten up any lesson or add a whole new dimension to your art, science or math class with the PowerLite W16. Project brilliant 2D content, or use it with active shutter 3D glasses (sold separately) for amazing eye-popping 3D performance. Enjoy larger-than-life images with this versatile, native WXGA resolution (1280 x 800, 16:10 aspect ratio) widescreen, Full HD projector. It's portable and easy to set up with automatic horizontal and vertical image correction, and the convenient Screen Fit feature. With HDMI digital connectivity, connecting to your computer or media player is a breeze. Bring captivating 3D to your classroom and expand the world of education for your students.

### 3x Brighter Colors with Epson<sup>1</sup>

Brilliant image quality requires high color brightness (color light output), and Epson® 3LCD projectors have 3x Brighter Colors than leading competitive projectors.<sup>1</sup>

One brightness measurement (lumens) is not enough. A projector's specification needs to show both high color brightness and high white brightness. If color brightness is lower than white brightness, images may be dark, dull and lose detail. If not provided, be sure to ask for a projector's color brightness specification.

Get consistent, true-to-life color with Epson, whether you're projecting images with deep, dark colors or a white screen with text.



High color brightness and high white brightness

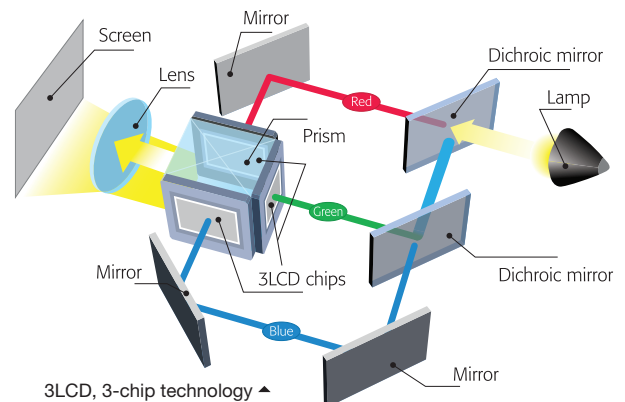


Color brightness significantly lower than white brightness

Actual photograph of side by side projected images from an identical signal source. Price, resolution and white brightness are similar for both projectors (Epson 3LCD and 1-chip DLP competitor). Both projectors are set to their brightest mode.

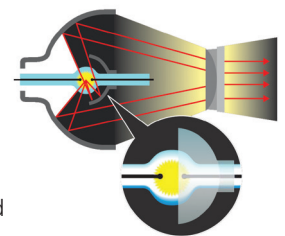
### 3LCD — The #1 projection technology in the world

- All 3LCD projectors have both high color brightness and high white brightness
- All 3LCD projectors have 3 chips
- 25% lower power consumption for lower energy costs<sup>4</sup>
- 20 years of road-tested reliability



### Energy-efficient E-TORL® lamp, exclusively from Epson

- Delivers more lumens per watt and lasts up to 5000 hours<sup>5</sup>
- Minimizes both light diffraction and light leakage
- E-TORL lamps maximize your presentation time, while minimizing your costs

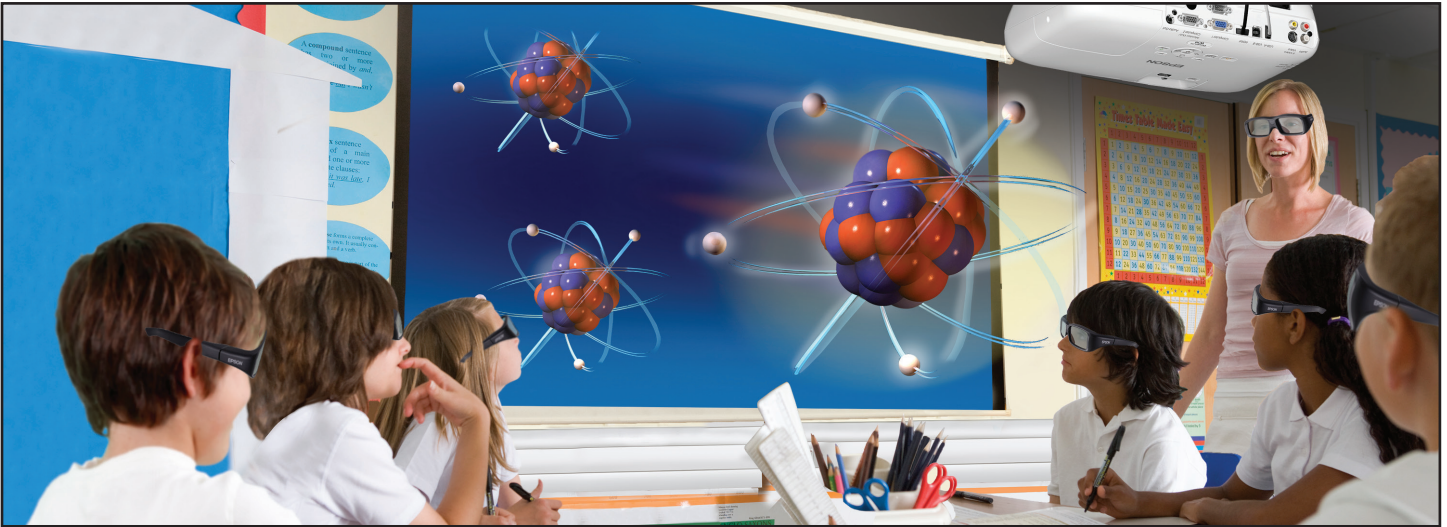


▲ E-TORL lamp

## The best-selling projectors in the world

Built with image quality and reliability in mind, Epson projectors enhance communication and inspire collaboration, while offering a low total cost of ownership. From long-throw projectors designed for traditional educational settings to ultra-short-throw and all-in-one solutions built for progressive classrooms, Epson has the model made for you.





### Dynamic classroom content in 2D or 3D – the choice is up to you

Now, you can do even more to engage every student in your classroom. Driven by 3LCD technology, the versatile PowerLite W16 ensures amazing quality and color for both 2D and 3D content. Add 3D material to enhance each lesson and ensure a truly dynamic visual experience. Studies show that retention is often increased when 3D visuals are used.

(Source: 3D in the Classroom Public Health Report; American Optometric Association, 2011)

### What you'll need to bring active 3D to your classroom

- A PowerLite W16 projector
- Active shutter 3D glasses (sold separately)
- 3D content
- A media player with HDMI output
- An optional ceiling mount (if you choose to mount the projector)



### Supports multiple 3D formats

The PowerLite W16 supports multiple 3D formats, eliminating the need for an external converter box. However, most 3D-ready projectors only support one format, and an external converter box must be purchased in order to support multiple formats. So, when you are evaluating the right 3D projector for your classroom, make sure to check to see if the projector supports your preferred multiple 3D formats.

3D Format	PowerLite W16*	3D-Ready Projector**
Side-by-Side	✓	X
Top-and-Bottom	✓	X
Frame Packing	✓	X
Frame Sequential	X	✓

\*Via HDMI signal.

\*\*Most 3D-Ready projector models.

## Remarkable widescreen performance

Featuring WXGA resolution (1280 x 800, 16:10 aspect ratio), the PowerLite W16 is ideal for use with the latest generation widescreen computers, and great for projecting widescreen content. It gives you:

- 30% more image area than a 4:3 image
- 10% more image area than a 16:9 image

The PowerLite W16 still allows you to display 4:3 and 16:9 content.



XGA



1024 x 768 (4:3 aspect ratio)

WXGA



1280 x 800 (16:10 aspect ratio)

## High-definition video and audio with HDMI digital connectivity

Delivers both audio and brilliant video content with just one cable. Compatible with the latest laptops, Blu-ray® and media players.



## Expanded USB functionality

- Deliver PC-free image slideshows and movies using a USB flash drive (supports multiple file formats: JPEG, PNG, GIF, BMP and AVI)
- Partner your projector directly with the Epson DC-06 document camera



## 3-in-1 USB Plug 'n Play for PC and Mac®

Three features, all with one standard USB connection eliminate the need for three separate cables.



- Display your presentation
- Transmit audio
- Control your presentation via remote control

## Easy setup and image adjustments

The PowerLite W16 offers the ultimate in placement flexibility.

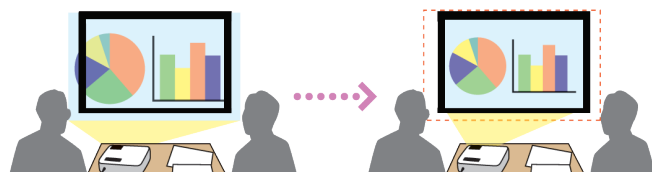
- Automatic horizontal (+/- 20 degrees) and vertical (+/- 30 degrees) image correction — place the projector off-center from the screen and still get a correctly proportioned image
- Convenient Screen Fit feature — automatically adjust the projected image to fill the screen with the touch of a button
- Quick Corner — move any of the four corners of an image independently, for a perfectly rectangular picture



Without horizontal image correction



With horizontal image correction



Without Screen Fit

With Screen Fit

## Convenient control and energy-saving features

- Instant Off® — no cool-down time required; it's ready to shut down when you are
- A/V Mute — pause your presentation to direct focus elsewhere or take a quick break
- Sleep Mode — set from 1 to 30 minutes to save energy when no signal is detected
- Direct Power On/Off — power the projector on/off with the flip of a wall switch

## Built-in closed captioning<sup>6</sup>

- Essential for education — helps meet ADA508 requirements for students with hearing impairments
- Helps save money — no need to pay for an additional decoder and installation
- Effective and easy to use — easily enabled or disabled through the projector remote or menu



Compact and portable design ▲



## PowerLite W16 3D WXGA 3LCD Projector Additional Features/Benefits

- **Amazing image quality** — native WXGA resolution (1280 x 800, 16:10 aspect ratio)
- **3-in-1 USB Plug 'n Play** — instantly display your presentation, transmit audio, and use your remote control as a mouse to control your presentation
- **Standby audio out** — transmit audio to connected external speakers, even when the projector is “off” (in standby mode); saves energy since the projector is not in full power mode
- **Energy-efficient E-TORL lamp** — up to 5000-hour lamp life<sup>5</sup>

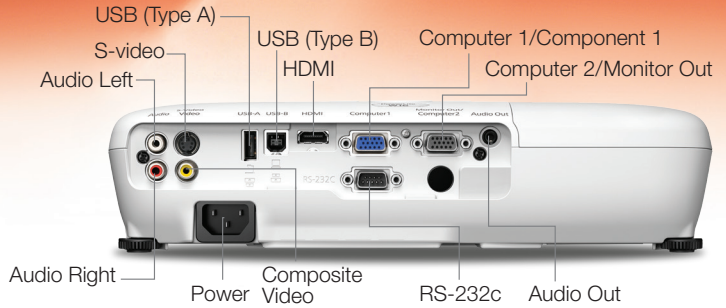
## Better Products for a Better Future™

For more information on Epson's environmental programs, go to [eco.epson.com](http://eco.epson.com)

### Eco Features

- RoHS compliant
- Recyclable product<sup>7</sup>
- Epson America, Inc. is a SmartWay<sup>SM</sup> Transport Partner<sup>8</sup>





## PowerLite W16 3D WXGA 3LCD Projector

Product Name	Product Code	UPC
PowerLite W16 Projector	V11H493020	0 10343 90401 9
Genuine Epson Lamp	V13H010L67	0 10343 88423 6
Replacement Air Filter	V13H134A42	0 10343 90405 7

### Specifications

#### Projection System

Epson 3LCD, 3-chip technology,  
RGB liquid crystal shutter projection system

#### Projection Method

Front / Rear / Ceiling mount

#### Driving Method

Poly-silicon TFT Active Matrix

#### Pixel Number

1,024,000 dots (1280 x 800) x 3

#### Color Brightness<sup>2</sup>

Color Light Output: 3000 lumens in 2D mode

#### White Brightness<sup>2</sup>

White Light Output: 3000 lumens in 2D mode

#### Aspect Ratio

Native 16:10 widescreen, supports 16:9/4:3

#### Native Resolution

1280 x 800 (WXGA)

#### Resize

640 x 480 (VGA), 800 x 600 (SVGA),  
1024 x 768 (XGA), 1152 x 864 (SXGA),  
1280 x 960 (SXGA2), 1280 x 1024 (SXGA3),  
1360 x 768 (WXGA 60-2), 1440 x 900 (WXGA+),  
1400 x 1050 (SXGA+), 1600 x 900 (WXGA++),  
1600 x 1200 (UXGA), 1680 x 1050 (WSXGA+ 60)

#### Lamp Type

200 W UHE (E-TORL)

#### Lamp Life<sup>5</sup>

Up to 5000 hours (ECO mode)  
Up to 4000 hours (Normal mode)

#### Throw Ratio Range

1.30 – 1.56

#### Size (projected distance)

33" – 318"

#### Keystone Correction (Automatic)

Vertical: ± 30 degrees  
Horizontal: ± 20 degrees

#### Mac Connectivity

Projector is Mac compatible via USB,  
DVI to HDMI or VGA adapter (not included)

#### Contrast Ratio

Up to 5000:1 (2D)  
Up to 3000:1 (Active 3D)

#### Color Reproduction

Full-color (16.77 million colors)

### Specifications (continued)

#### Built-in 3D Emitter

RF Type, distance within 32.8'

#### 3D Format

Auto/Side-by-Side/Top-and-Bottom/2D/  
Frame Packing

### Projection Lens

#### Type

Manual Focus / Manual Optical Zoom

#### F-number

1.58 – 1.72

#### Focal Length

16.9 – 20.3 mm

#### Zoom Ratio

1.0 – 1.2 Optical

#### Lens Cover

Slide lens shutter (AV Mute slide)

### Other

#### Display Performance

NTSC: 480 lines  
PAL: 560 lines  
(Depends on observation of the  
multi-burst pattern)

#### Input Signal

NTSC/NTSC4.43/ PAL/M-PAL/N-PAL/  
PAL60/SECAM

#### Interfaces

Computer: D-sub 15 pin x 2  
Component video: D-sub 15 pin x 1  
(shared with Computer 1)  
S-video: Mini DIN x 1  
Composite video: RCA (Yellow) x 1  
Audio in: RCA x 1 (L and R)  
USB connector: Type B x 1  
(USB display, audio and mouse control)  
USB connector: Type A x 1  
(USB memory/document camera)  
HDMI x 1  
Serial: RS-232c x 1  
Monitor out: D-sub 15 pin x 1  
(shared with Computer 2)  
Audio out: Mini stereo x 1

### Other (continued)

#### Speaker

2 W Monaural

#### Standby Audio

Through Audio Out only

#### Operating Temperature

5 °C to 35 °C (41 °F to 95 °F)

#### Power Supply Voltage

100 – 240 V AC, ±10%, 50/60 Hz

#### Power Consumption

237 W (ECO Mode)  
289 W (Normal Mode)  
3.2 W Standby (Communication On)  
0.36 W Standby (Communication Off)

#### Fan Noise

100 dB (ECO Mode)  
36 dB (Normal Mode)

#### Security

Kensington® Security Lock Port, Padlock,  
Security Cable Hole and Password  
Protect Function

### Dimensions (W x D x H)

Including feet: 12.8" x 9.6" x 3.1"  
Excluding feet: 12.8" x 9.6" x 3.0"  
Weight: 6.0 lb

### Remote Control

#### Features

Source search, video, computer, USB, power,  
aspect, color mode, volume, e-zoom, A/V mute,  
freeze, menu, page up and down, help, auto,  
mouse functions, user, esc, screen fit,  
2D/3D, pointer

#### Operating Angle

Right/left: ± 30 degrees  
Upper/lower: ± 15 degrees

#### Operating Distance

19.7' (6 m)

### Support

#### The Epson Connection<sup>SM</sup>

Pre-sales support  
U.S. and Canada 800-463-7766  
Internet website www.epson.com

#### Service Programs

Two-year projector limited warranty,  
Epson Road Service program, PrivateLine<sup>®</sup>  
dedicated toll-free support and 90-day limited  
lamp warranty

#### What's In The Box

PowerLite W16 3D WXGA 3LCD projector,  
carrying case, power cord, VGA cable, remote  
control with 2 AA batteries, quick setup guide  
and user's guide CD

### Accessory Part Numbers

Genuine Epson lamp (ELPLP67)	V13H010L67
Replacement air filter (ELPAF42)	V13H134A42
Active Shutter RF 3D glasses (ELPGS03)	V12H548006
Active speakers (ELPSP02)	V12H467020
Epson DC-06 document camera	V12H321005
Epson DC-11 document camera	V12H377020
Epson DC-20 document camera	V12H500020
Universal projector ceiling mount	ELPMBPJF
Adjustable suspended ceiling channel kit	ELPMBP01
False ceiling plate kit	ELPMBP02
Structural round ceiling plate	ELPMBP03
Adjustable extension column (pipe) 8"-11"	ELPMB01
Component to VGA cable	ELPKC19
Kensington security lock	ELPSL01
Duet™ screen	ELPSC80
ES3000 portable screen (ELPSC26H)	V12H002S3Y

1 Compared to leading 1-chip DLP business and education projectors based on NPD data, July 2011 through June 2012. Color brightness (color light output) measured in accordance with IDMS 15.4. Color brightness will vary depending on usage conditions.

2 Color brightness (color light output) and white brightness (white light output) will vary depending on usage conditions. Color light output measured in accordance with IDMS 15.4; white light output measured in accordance with ISO 21118.

3 Includes side-by-side, top-and-bottom and frame packing 3D formats.

4 Data source: ProjectorCentral.com Jan. 2012. Average of 1122 shipping models for which the manufacturers provided lumens and total power data, all resolutions and brightness levels.

Energy efficiency was measured as wattage per lumen. It was measured for both 3LCD and 1-chip projectors in each of five brightness segments. 3LCD projectors averaged less required electricity per lumen in each of the five segments.

5 Lamp life will vary depending upon mode selected, environmental conditions and usage. Lamp brightness decreases over time.

6 Available in 2D mode only, with NTSC signal (Composite, S-video.)

7 See our website for convenient and reasonable recycling options at [www.epson.com/recycle](http://www.epson.com/recycle)

8 SmartWay is an innovative partnership of the U.S. Environmental Protection Agency that reduces greenhouse gases and other air pollutants and improves fuel efficiency.

**Epson America, Inc.**  
3840 Kilroy Airport Way, Long Beach, CA 90806

**Epson Canada Limited**  
185 Renfrew Drive, Markham, Ontario L3R 6G3

**www.epson.com**  
**www.epson.ca**

Specifications and terms are subject to change without notice. EPSON, E-TORL, Instant Off, PowerLite and Quick Corner are registered trademarks, EPSON Exceed Your Vision is a registered logomark and Better Products for a Better Future is a trademark of Seiko Epson Corporation. PrivateLine is a registered trademark, Duet is a trademark and Epson Connection is a service mark of Epson America, Inc. Mac is a trademark of Apple Inc., registered in the U.S. and other countries. SmartWay is a service mark of the U.S. Environmental Protection Agency. All other product and brand names are trademarks and/or registered trademarks of their respective companies. Epson disclaims any and all rights in these marks. Copyright 2013 Epson America, Inc. CPD-37534R1 1/13