



Feit Electric App User Guide Smart Bulbs



FEIT ELECTRIC APP USER GUIDE

Setup instructions for Siri Shortcuts[®], Alexa and Google Assistant.

Smarter, More Helpful Home Light Bulbs

Works with Siri Shortcuts[®], Alexa and Google Assistant

Easily turn lights On/Off, set groups and schedules. Choose energizing daylight or wind down with relaxing soft white light. Get creative with color, it's all up to you. Control lighting with simple voice commands and an intuitive mobile app. Set up is simple. The bulbs connect directly to your Wi-Fi at home. It has never been easier to customize your home's lighting to suit your lifestyle.



CONTENTS

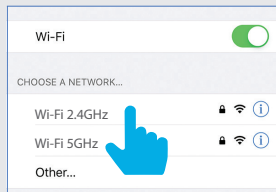
Network Connect and App Setup.....	1
App Setup.....	2-3
Smart Plug Setup.....	4-6
Profile: Overview / Security / Location / Alarm / Family / Notifications / Settings / Sharing / Help / Alexa / Google / About	7-13
Features	14-17
Settings	17
Groups.....	18-20
Room Management	21
Creating Smart Scenes	22-28
Siri Shortcuts®	29-30
Alexa	31-34
Google Assistant.....	35-37

NETWORK CONNECT AND APP SETUP

1

Connect to a 2.4GHz Wi-Fi Network. Download and install the Feit Electric App

NOTE: Only works with 2.4GHz Wi-Fi networks



Go to your Wi-Fi settings and connect your phone to your 2.4GHz Wi-Fi network.

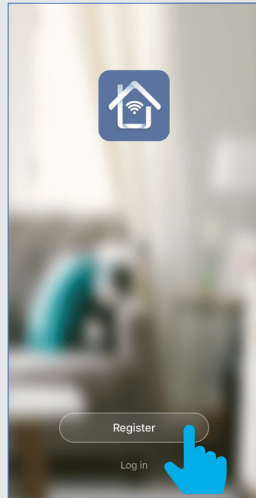


Download and launch the Feit Electric App



2

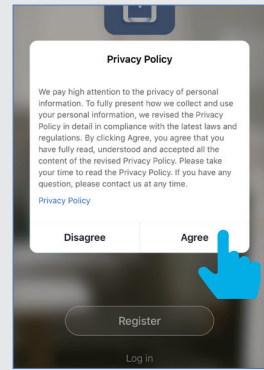
Register



Tap **Register** to create a new account or Tap **Log in** if you have an existing account.

3a

Privacy Policy



Tap **Agree**.

3b

Log in

United States of America +1 >

Email / Mobile

Password

Log in

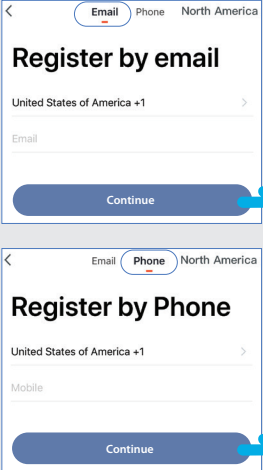
Verify via SMS

Forgot Password

Returning users **Log in** and skip to step 10.

APP SETUP

4 Register



Register by email

United States of America +1

Email

Continue

Register by Phone

United States of America +1

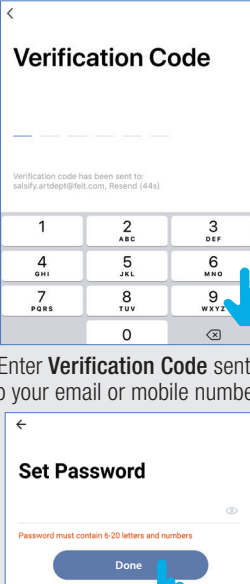
Mobile

Continue

You may use an email or mobile number to create an account. Then tap **Continue**.

(A verification code will be sent to your email or mobile number.)

5 Verification/Password



Verification Code

Verification code has been sent to: satisfy.artdept@feit.com, Resend (4/4s)

1	2 ABC	3 DEF
4 GHI	5 JKL	6 MNO
7 PQRS	8 TUV	9 WXYZ
	0	<

Enter **Verification Code** sent to your email or mobile number.

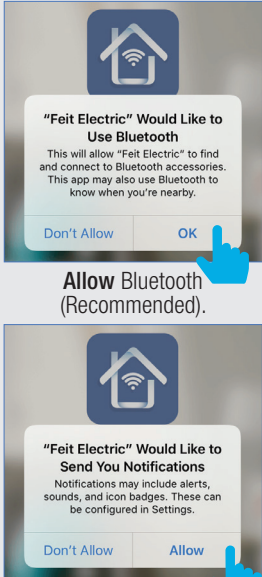
Set Password

Password must contain 6-20 letters and numbers

Done

Create a Password then tap **Done**.

6 Permissions



"Feit Electric" Would Like to Use Bluetooth

This will allow "Feit Electric" to find and connect to Bluetooth accessories. This app may also use Bluetooth to know when you're nearby.

Don't Allow OK

Allow Bluetooth
(Recommended).

"Feit Electric" Would Like to Send You Notifications

Notifications may include alerts, sounds, and icon badges. These can be configured in Settings.

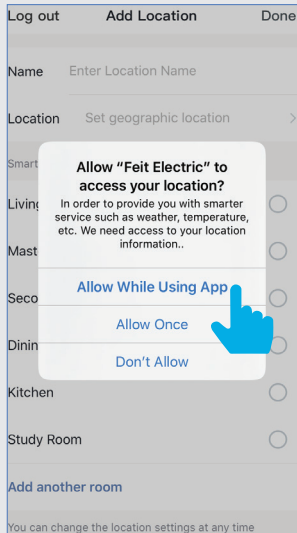
Don't Allow Allow

Allow Notifications
(Highly Recommended).

APP SETUP

7

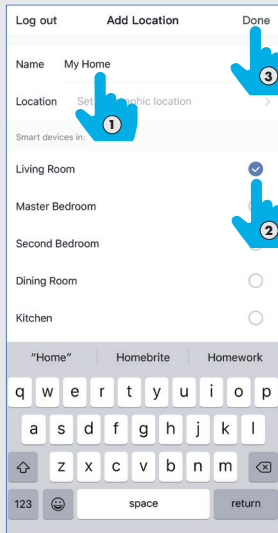
Location Access



You must **Allow** Feit Electric App to access your location to connect to your device.

8

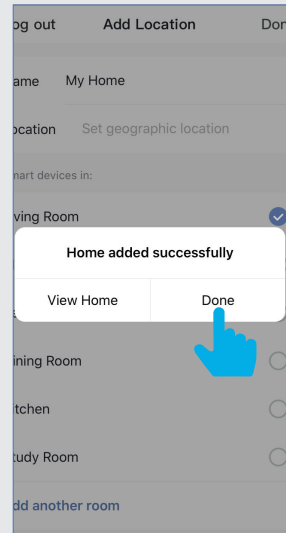
Name Location



- ① Enter your location name.
- ② Check where your device is located.
- ③ Tap **Done**.

9

Confirm Home Added



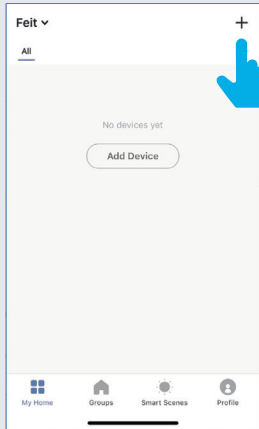
Tap **Done** or **View Home** for location settings.

SMART BULB SETUP

1

Add Device

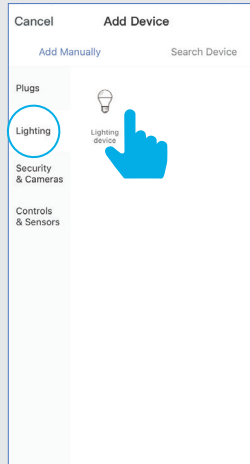
IMPORTANT!
Install and Power On
your Smart Bulb(s) before proceeding.



Tap + in the upper right corner
NOTE: If this is the first device you
are setting up, you can also
select **Add Device**.

2

Add Lighting Device



Not Compatible with 5G Wi-Fi Networks

Make sure you are connected to
a 2.4GHz Wi-Fi Network, then tap
Lighting, then tap **Lighting device**.

3

Confirm Pairing



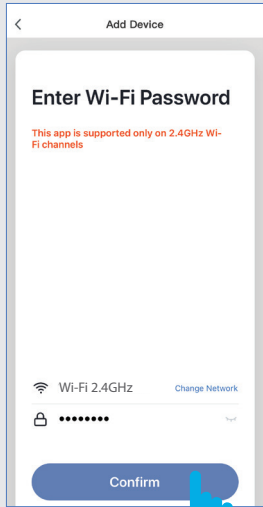
Power On the bulb(s) and make sure
the light(s) are blinking,
then tap **Confirm**.

NOTE: If the bulbs are not blinking,
turn bulbs ON-OFF-ON-OFF-ON.

SMART BULB SETUP

4

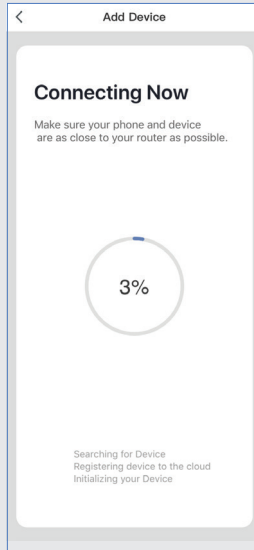
Confirm Wi-Fi connection



After confirming that you are on a 2.4GHz Wi-Fi network, enter your password then tap **Confirm**.

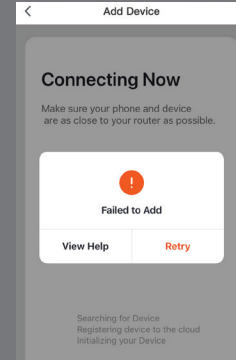
5

Connect



The connecting status window will appear. Wait until it's completed.

Troubleshooting

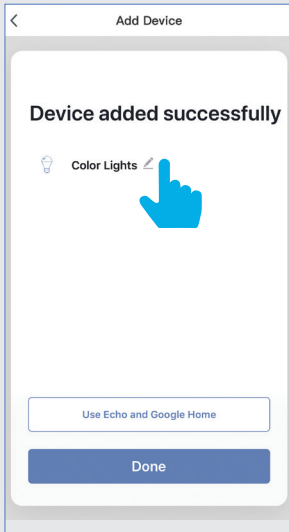


If you see a **Failed to Add** notification, check to be sure your Wi-Fi password was entered correctly. Close the app and repeat the previous steps to try connecting again or **View Help** for further assistance.

SMART BULB SETUP

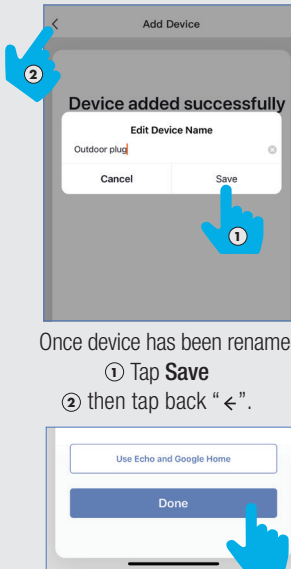
6

Device Added



Once device is successfully added, tap the **Pen** icon to rename the device.

Edit Device Name

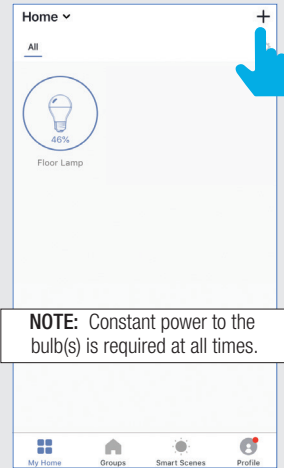


Once device has been renamed,

- 1 Tap **Save**
- 2 then tap back "**<**".

Then tap **Done**.

Adding Additional Devices



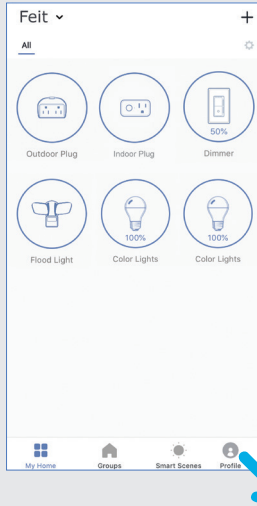
NOTE: Constant power to the bulb(s) is required at all times.

To add additional devices tap the plus (+) sign in the upper corner. Repeat steps **2, 3, 4, 5** and **6**.

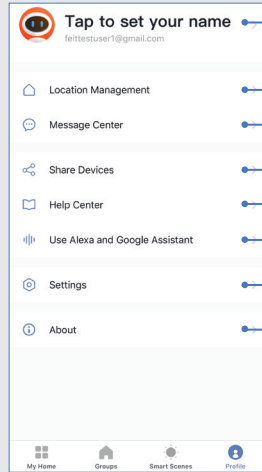
PROFILE: OVERVIEW

Profile

From the Home screen
Tap **Profile**.



From the **Control Panel** you can access
features and control your flood light.

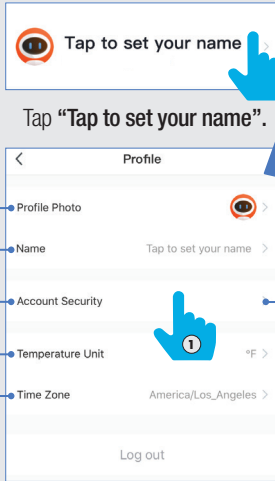


- 1 **Tap to set your name** profile photo, change password, gesture password, close account
- 2 **Location Management** add locations
- 3 **Message Center** view detection alerts, Family and notifications
- 4 **Share Devices** share devices
- 5 **Help Center** FAQ's, Network Diagnostics and Report Issues (Chat)
- 6 **Use Alexa and Google Assistant** add devices
- 7 **Settings** turn sound on/off, push notifications, clear cache
- 8 **Rate Us**, About Feit Electric, Service Agreement, Current Version

PROFILE: PASSWORD

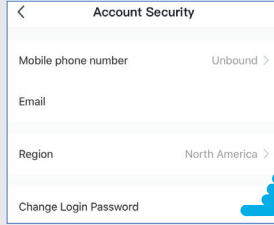
1

Modify Profile



- Tap to change time zone
- Tap to change Temperature Units
- Tap for for Account Security submenu
- Tap to set your name
- Tap to upload photo

Account Security



- 1 Tap **Account Security** then tap
- 2 **Change Login Password**.

Verification Code

Verification Code

Verification code has been sent to:
fetu@fett.com, Resend (57)

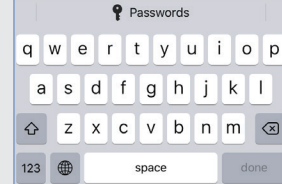
You will receive an email (or text) with a **Verification Code** to input here.

Change Password

Set Password

Password must contain 6-20 letters and numbers

Done



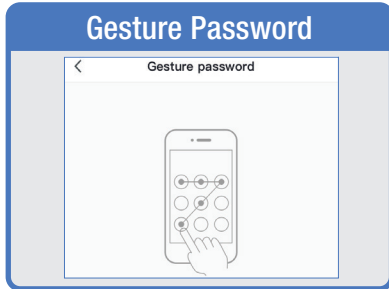
Once you input the Verification Code, you will be brought to this window to input new **Password**.



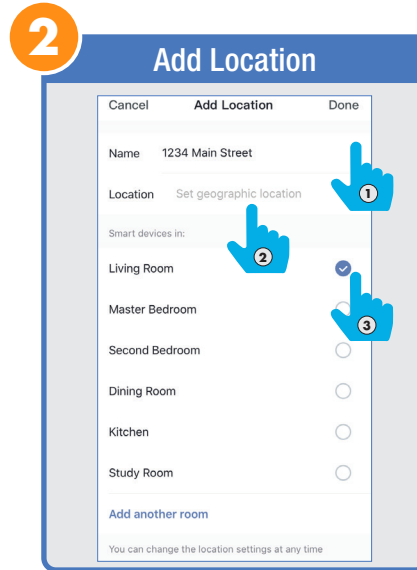
PROFILE: SECURITY / LOCATION / ALARM / FAMILY



Tap **Gesture Password**.

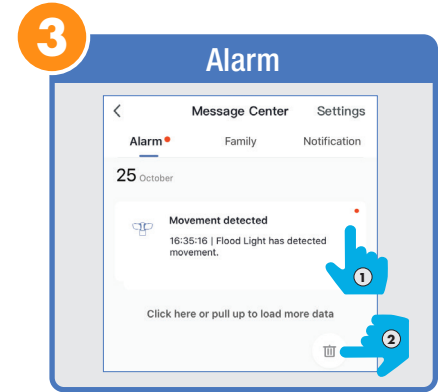


Set your **Gesture Password**.



From the **Profile Home Screen**,
Tap **Location Management**.

- ① Name your Location,
- ② Tap Location (Set Geographic Location).
- ③ Select a Room or create your own (Add another room).



From the **Profile Home Screen**,
Tap **Message Center**.

Under the tab Alarm you can view activities recorded by the Security Camera.

- ① Once selected, you can
- ② delete them by tapping the trash icon.

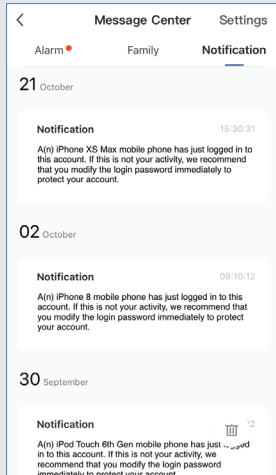


Share **Messages** with Family.



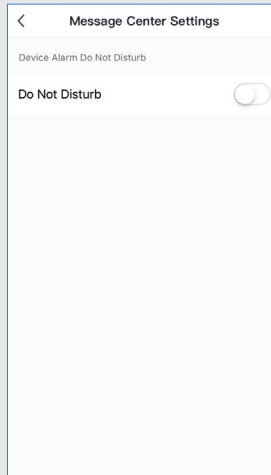
PROFILE: NOTIFICATIONS / SETTINGS / SHARING

Notifications



Tap **Notifications** for Notifications.

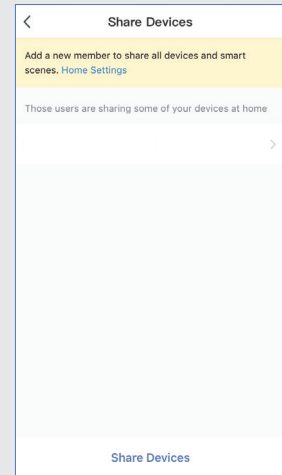
Settings



Tap **Settings** for the
Do Not Disturb option.

4

Device Sharing




From the Profile Home Screen
tap **Share Devices**.

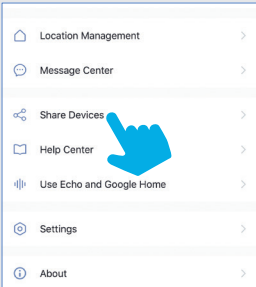


PROFILE: DEVICE SHARING

Device Sharing

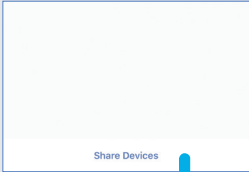


From the Home Page tap **Profile**.

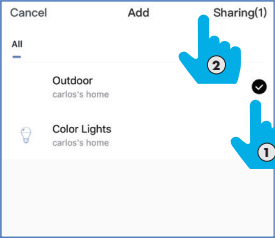


Tap **Share Devices**.

Device Sharing

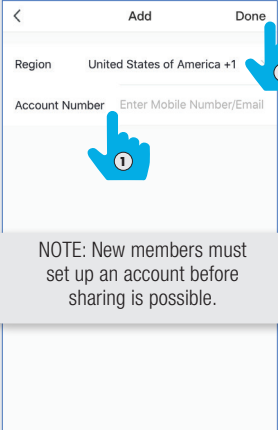


Tap **Share Devices** at the bottom.



① Select the device that you wish to share.
② Tap **Sharing** in the upper right corner.

Device Sharing



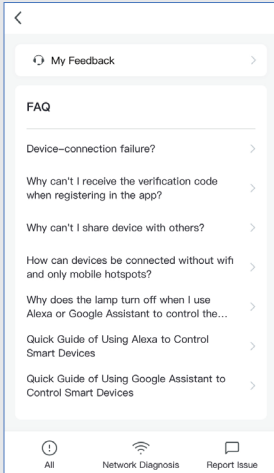
NOTE: New members must set up an account before sharing is possible.

① Enter the new member's mobile number or email address
② then tap **Done**.

PROFILE: HELP CENTER

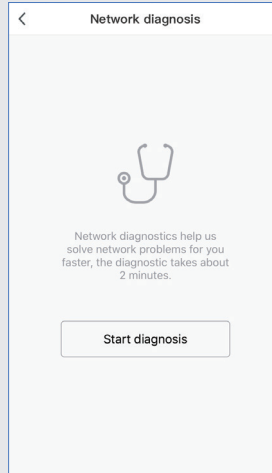
5

FAQ's



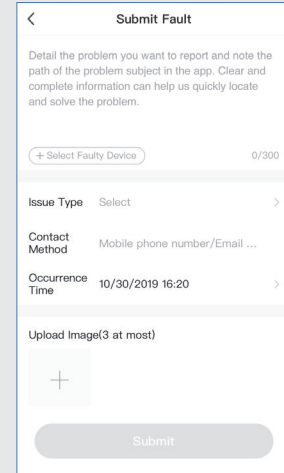
From the Profile Home Screen tap **Help Center**.

Network Diagnostics



From the **Help Center** tap **Network Diagnostics** for network issues,.

Report Issues

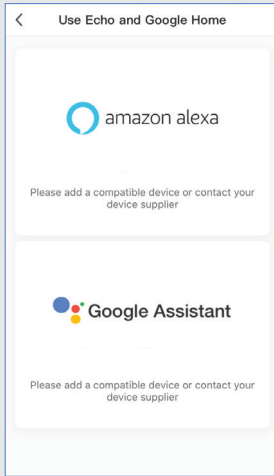


From **Help Center** tap **Report Issues**. Start a chat to help resolve an issues. Will show in My Feedback.

PROFILE: ALEXA / GOOGLE / SETTINGS / ABOUT

6

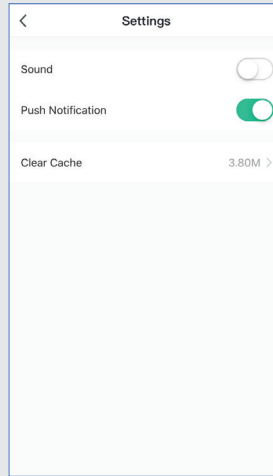
Alexa / Google



From the Profile Home Screen tap either the **Amazon Alexa** or **Google Assistant** logo's for step by step instructions how to set up these devices.

7

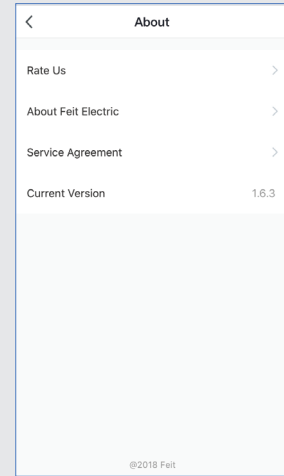
Settings



From the Profile Home Screen tap **Settings**. Turn Sound On/Off, Push Notifications On/Off and Clear Cache.

8

About

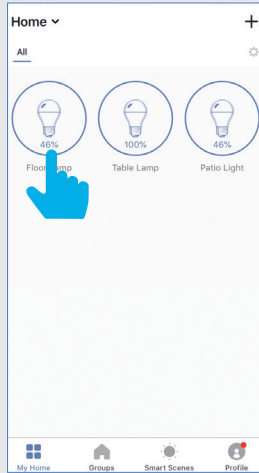


From the Profile Home Screen tap **About**. Tap on Rate Us, About Feit Electric, Service Agreement and Current Version for more options.

FEATURES

1

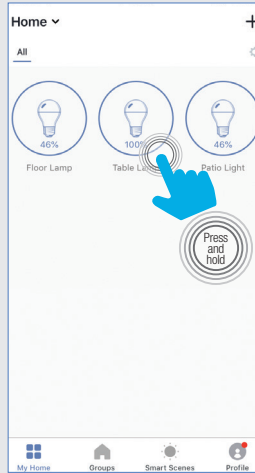
Individual Bulb On / Off



From the Home menu tap the a bulb icon to turn the bulb **On** or **Off**.

2

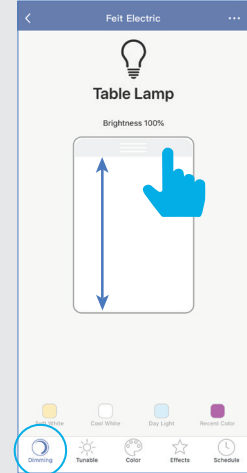
Individual Bulb Setting



Press and **hold** the icon for 2 seconds for the bulb settings.

3

Settings / Dimming

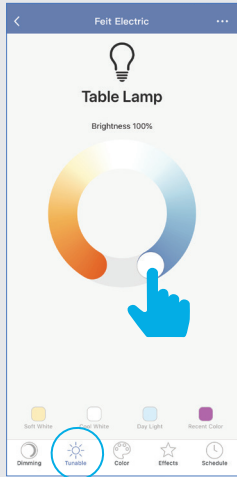


Slide the dimming bar up or down to set the brightness level.

FEATURES

4

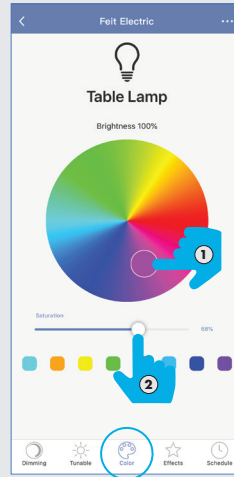
Tunable White



Tap Tunable icon at bottom of the app.
Use the round slider to adjust color temperatures from Warm (2700K) to Cool (6500K).

5

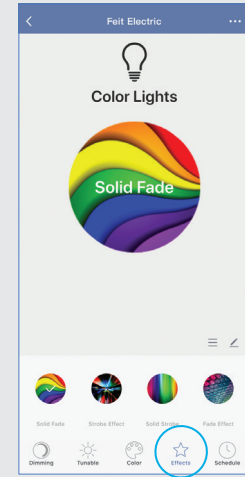
Color Changing



① Tap on any part of the color picker to select a desired color or choose a preset color. (Scroll up to see the available preset color choices at the bottom of the menu.)
② Adjust Saturation.

6

Effects

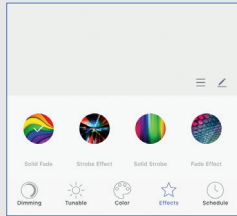


Tap **Effects** icon at the bottom of the App.



FEATURES

Effects



Then select one of these 4 modes:

Solid Fade:

Smooth fade in and out of 1 color.

Strobe Effect:

Flash transition between colors.
(Up to 6 colors)

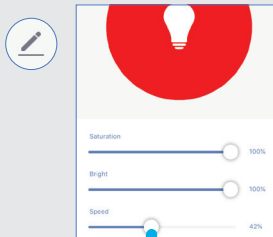
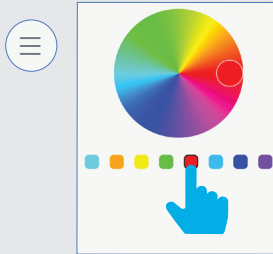
Solid Strobe:

Flash on and off of 1 color

Fade Effect:

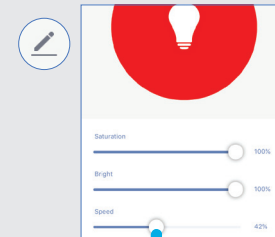
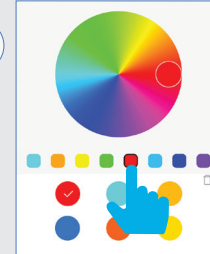
Smooth transition between colors
(Up to 6 colors)

Effects



The “**Solid**” settings **1** and **3** allow you to choose a bulb color and modify the **Saturation**, **Brightness** and **Speed**.

Effects

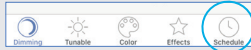


The “**Effect**” settings **2** and **4** allow you to choose up to 6 bulb colors and modify the **Saturation**, **Brightness** and **Speed**.

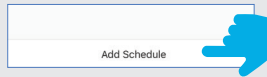
FEATURES / SETTINGS

7

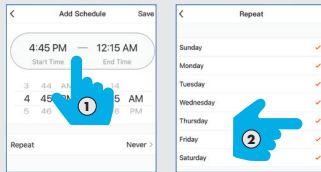
Schedules



Tap **Schedule** icon at the bottom of the App.



Tap **Add Schedule**.



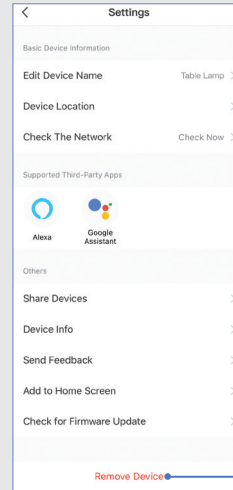
① Choose a Start Time (On) and End Time (Off). To repeat on certain days of the week tap **Repeat**, otherwise the schedule will only occur once.

② Tap on the day(s) of the week you would like the schedule to repeat, then tap the back “←” the **Save**.

Settings

← Feit Electric ...

For more features, tap the context menu in the upper right corner (•••).



Settings window.

Edit device name

Device Location

Check the Network

Instructions how to connect to Alexa and Google Assistant

Share Devices (See pages 10-11)

See Owner, Virtual ID, IP Address, etc.

Report problems with the Plug

Add to Home Screen

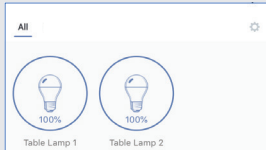
Check for Firmware Updates

Remove Device from App

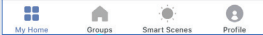
GROUPS

1

Groups



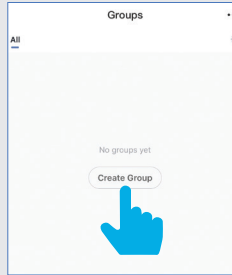
NOTE: To create groups you will need at least 2 light bulbs.



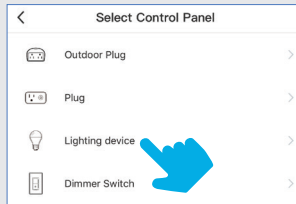
From the Home Page,
tap **Groups**.

2

Create Group



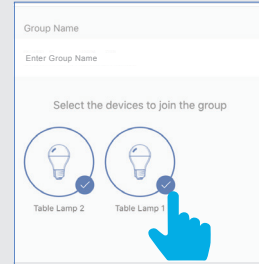
Once you are in Groups,
tap **Create Group**.



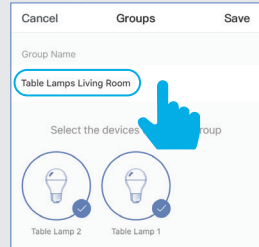
Tap **Lighting device**.

3

Name Group



Select the light bulbs that you
want to group.

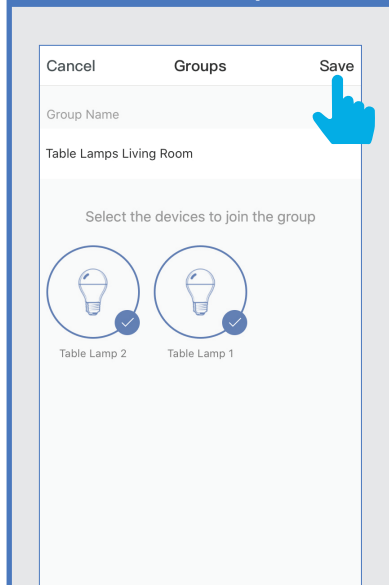


Tap **Enter Group Name**
and name your group.

GROUPS

4

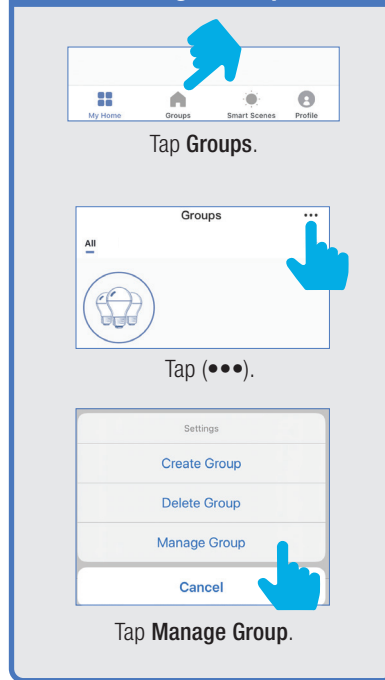
Save Group



Once the group is named and the bulbs are selected tap **Save**.

5

Manage Groups

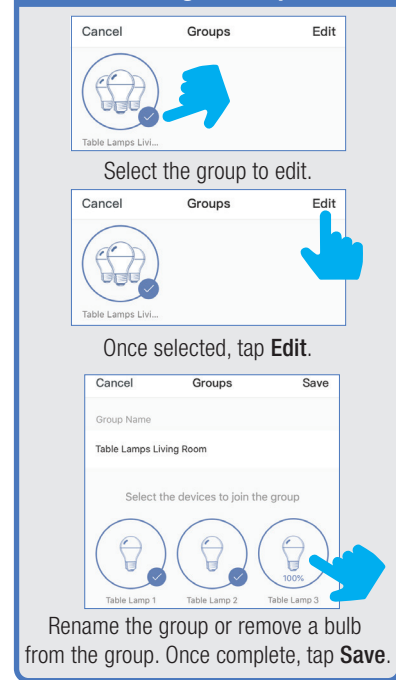


Tap **Groups**.

Tap (•••).

Tap **Manage Group**.

Manage Groups



Select the group to edit.

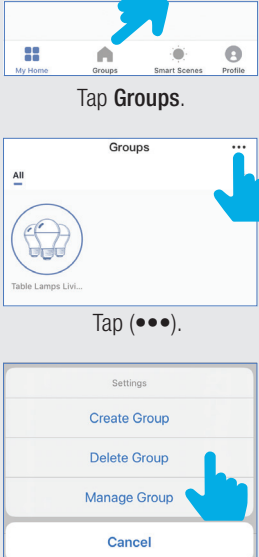
Once selected, tap **Edit**.

Rename the group or remove a bulb from the group. Once complete, tap **Save**.



GROUPS

Manage Groups

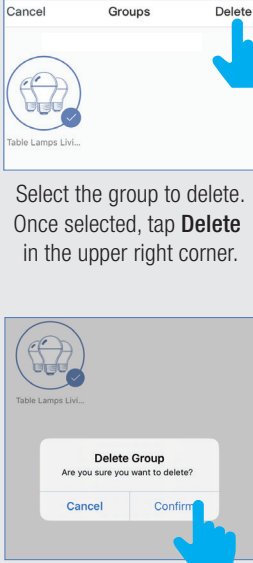


Tap **Groups**.

Tap (**•••**).

Tap **Delete Group**.

6 Delete Group



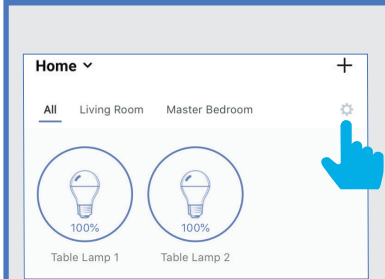
Select the group to delete.
Once selected, tap **Delete**
in the upper right corner.

Tap **Confirm** Delete Group.

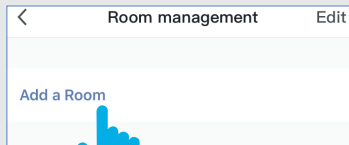
ROOM MANAGEMENT

1

Add a Room



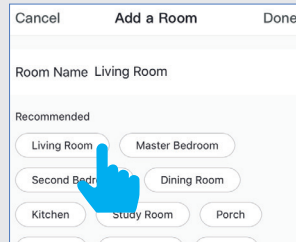
Tap the settings icon “⚙️” from the home menu.



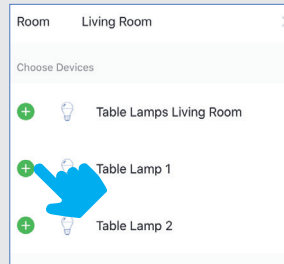
Tap **Add a Room**.

2

Add a Room



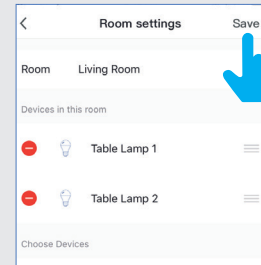
Tap on a preset room name or create your own.



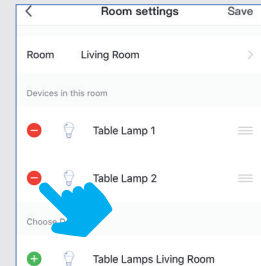
Add individual lights by tapping on the **+** icon next to each device name.

3

Room Settings



When finished, tap on **Save**.



Remove individual Lights by tapping on the **-** icon next to each device name.

CREATING SMART SCENES

1

Go to Smart Scenes

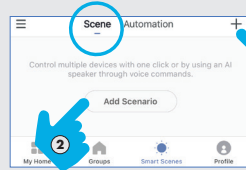


Use **Smart Scenes** to setup and name an action or group of actions to occur at the same time.

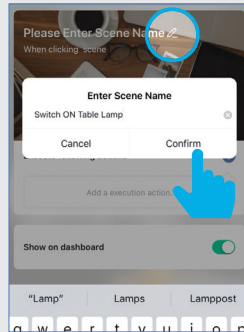
Open the Feit Electric App and tap **Smart Scenes** located at the bottom of the screen.

2

Add Scenario



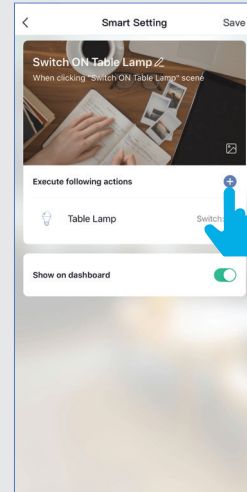
In the **Scene Tab** screen, tap ① **Add +** icon or ② **Add Scenario** to create a new scenario.



Enter the Scene Name by tapping on the **Pen** icon. Then, tap **Confirm**.

3

Add Action

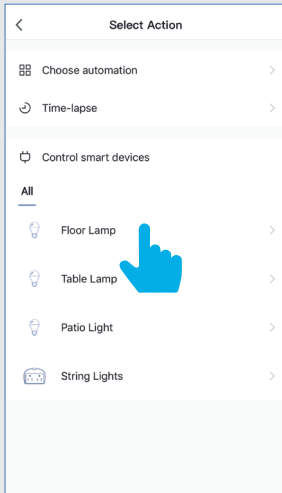


Next to "**Execute following actions**" tap the **+** icon or tap the **Add Action** box.

CREATING SMART SCENES

4

Select Action

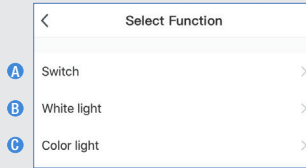


On the **Select Action** screen, tap on a Device or Group to execute an action on.

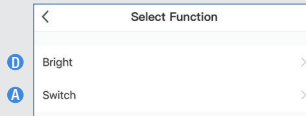
5

Select Function

RGB & Tunable White Bulb



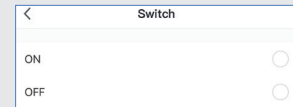
White Only Bulb



On the **Select Function** screen, tap on the action you want the device to perform. Different feature bulbs may have different actions available. Refer to the designations (A, B, C, D).

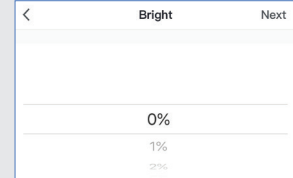
Select Function

RGB & Tunable White Bulb



A On the **Switch** screen, tap **On** or **Off**.

White Only Bulb

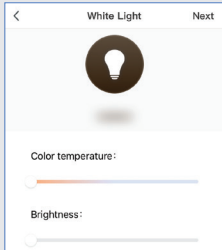


D On the **Bright** screen, select the brightness percentage.

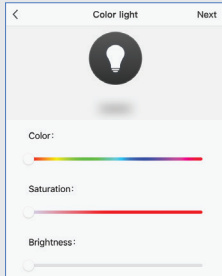


CREATING SMART SCENES (Selecting Functions)

Select Function



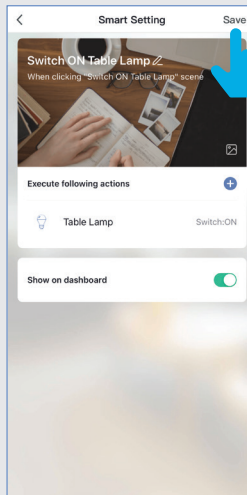
B On the **White Light** screen, set **Color temperature** and **Brightness** level.



C On the **Color Light** screen, select **Color (RGB)**, **Saturation** and **Brightness** level.

6

Smart Setting

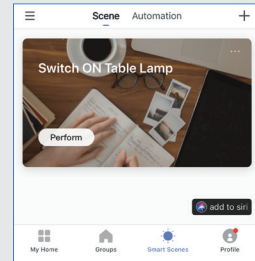


Once you have configured your action(s), tap **Save**.

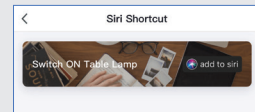
7

Scenario

See your Scenario in **Smart Scenes** under the **Scene** tab.



It will also appear on the top of your **My Home** screen.

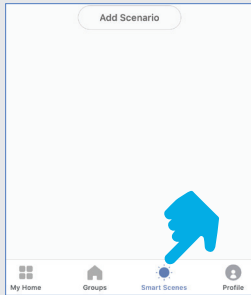


Tap on Scenario to execute your action.

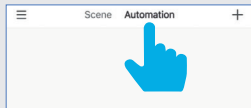
CREATING SMART SCENES (Automation)

8

Automation

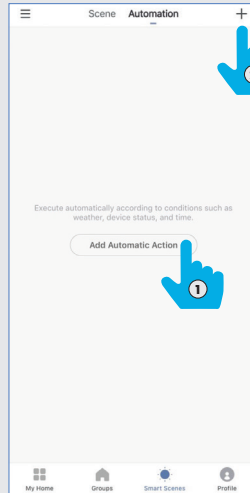


Set up actions that occur automatically. Automations can be triggered by other smart devices, sunrise/sunset etc. From the Home Page tap **Smart Scenes**.



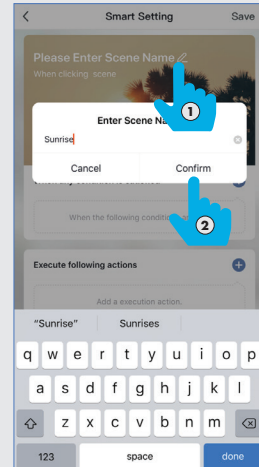
Tap **Automation** at the top of the screen.

Automation



- ① Then, tap "Add Automatic Action"
- ② or tap the "+" icon on the top right.

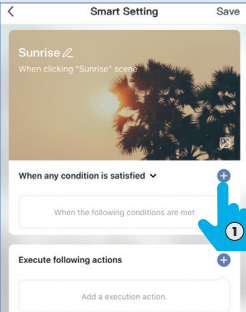
Automation



- ① Tap **Enter Screen Name**. Give it a name then tap ② **Confirm**.

CREATING SMART SCENES (Automation)

Automation



1 Tap +, then 2 select a condition in the **Select Condition** window.

2

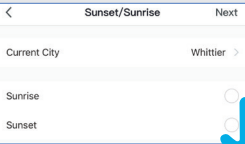
Select Condition

Select Condition for Task

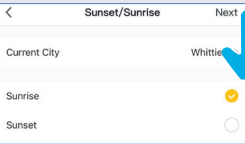
- Temperature >
- Humidity >
- Weather >
- Sunset/Sunrise >
- Wind Speed >
- Schedule >
- Device >

Automation

Example:

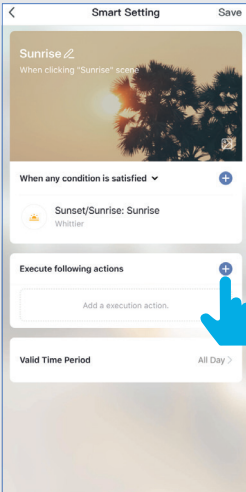


Select your location under **Current City**. Tap on a **Condition** (in this example, **Sunrise**).



Tap **Next**.

Automation

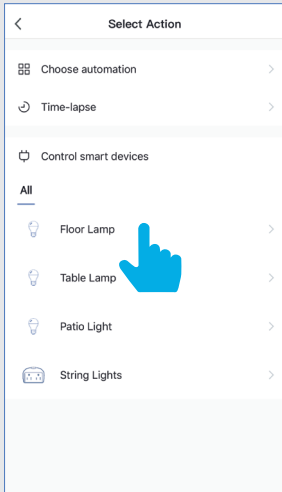


Then tap on "+" on **Execute following actions**.

CREATING SMART SCENES (Automation)

9

Select Action

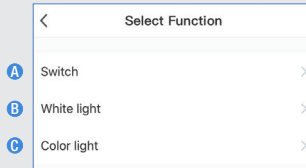


On the **Select Action** screen, tap on a Device or Group to execute an action on.

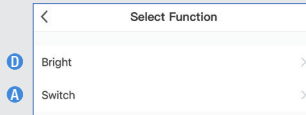
10

Select Function

RGB & Tunable White Bulb



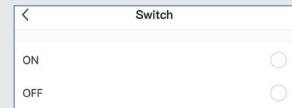
White Only Bulb



On the **Select Function** screen, tap on the action you want the device to perform. Different feature bulbs may have different actions available. Refer to the designations (A, B, C, D).

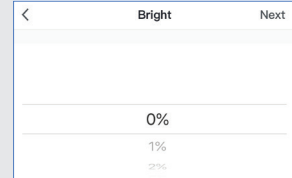
Select Function

RGB & Tunable White Bulb



A On the **Switch** screen, tap **On** or **Off**.

White Only Bulb

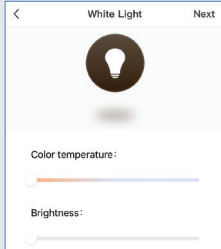


D On the **Bright** screen, select the brightness percentage.

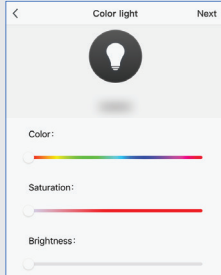


CREATING SMART SCENES (Automation)

Select Function



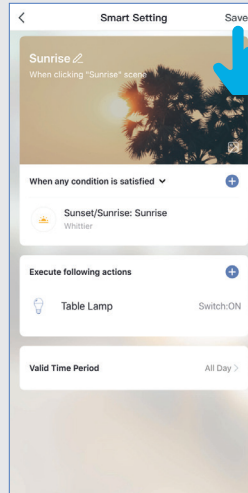
B On the **White Light** screen, set **Color temperature** and **Brightness** level.



C On the **Color Light** screen, select **Color (RGB)**, **Saturation** and **Brightness** level.

11

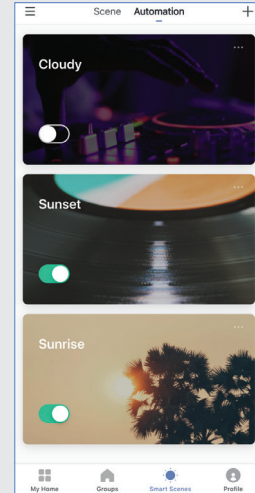
Smart Setting



Once you have configured your action(s), tap **Save**.

12

Automated Actions

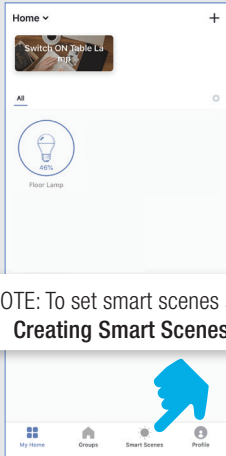


See your **Automated Actions** under the **Automation** tab.

ENABLE SIRI SHORTCUTS[®] (For use with iPhone)

1

Control Function

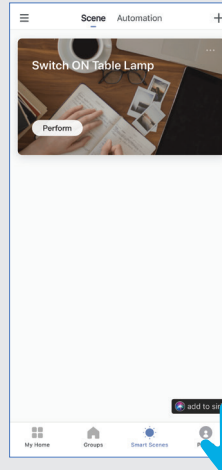


NOTE: To set smart scenes see
Creating Smart Scenes

To enable Siri to recognize the scenario you have created, open the Feit Electric App and tap **Smart Scenes** located at the bottom of the screen.

2

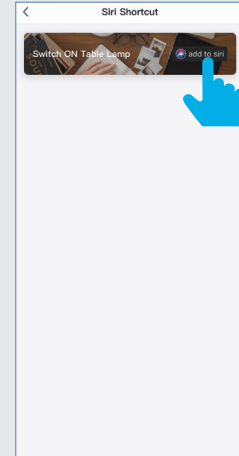
Control Function



In the Scene Tab screen, tap **add to Siri** at the bottom of the screen.

3

Control Function



In the **Siri Shortcut** screen, tap on the scenario you would like to add.

ENABLE SIRI SHORTCUTS® (For use with iPhone)

4

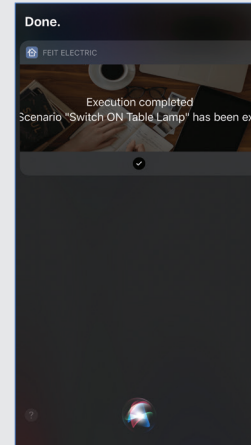
Adding Function



Once on the Add to Siri screen, tap on **Add to Siri** at the bottom of the screen.

5

Adding Function

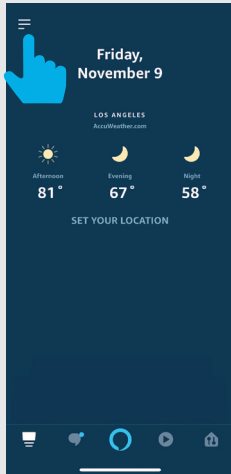


Now you can use the "Hey Siri" command to control this action from your iOS device. "Hey Siri" "Switch ON".

CONNECTING TO ALEXA

1

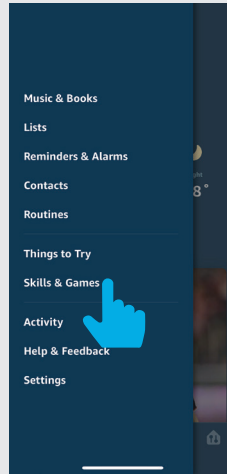
Launch Alexa



Launch the Alexa App then tap on the **Menu**.
(In the upper left corner)

2

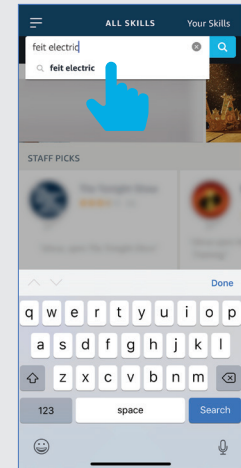
Skills & Games



Tap **Skills & Games**.

3

Search Feit App

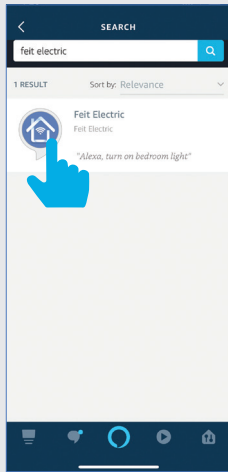


In the search menu type **Feit Electric**.

CONNECTING TO ALEXA

4

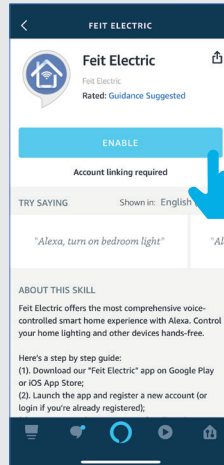
Select Feit App



Select **Feit Electric** App.

5

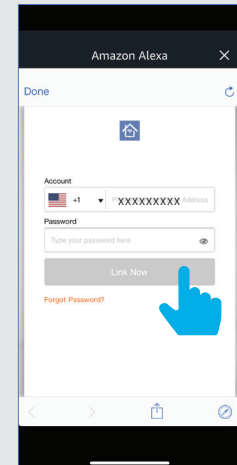
Enable



Tap **Enable**.

6

Link

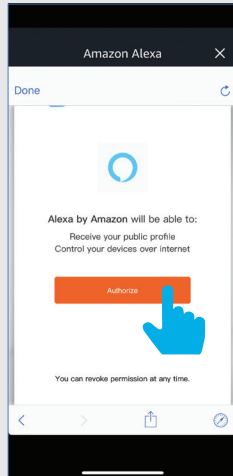


Enter the user & password from the Feit Electric App. Then tap **Link Now**.

CONNECTING TO ALEXA

7

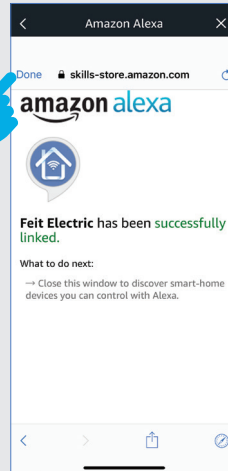
Authorize



Tap **Authorize**.

8

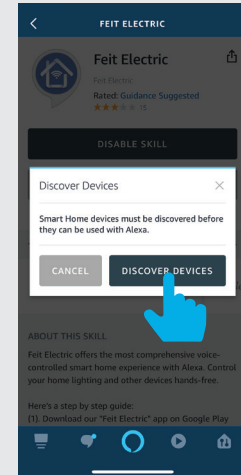
Linking Feit App



Tap **Done**
in the upper left corner.

9

Discover Devices

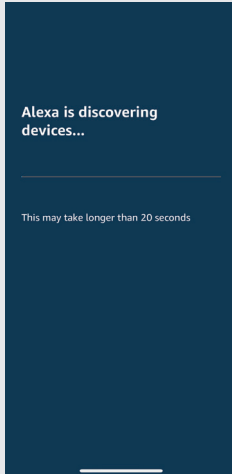


Tap **Discover Devices**.

CONNECTING TO ALEXA

10

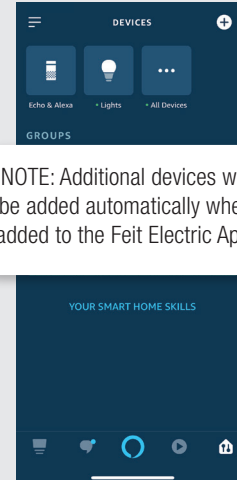
Authorize



Alexa will now discover and add device(s).

11

Discover...

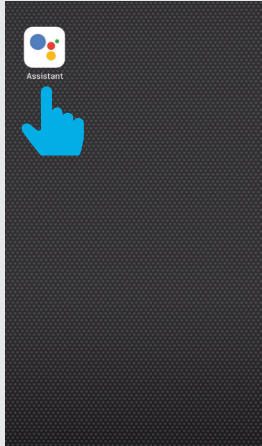


Once the device(s) are discovered they will appear under **Devices** (lower right corner).

CONNECTING TO GOOGLE ASSISTANT

1

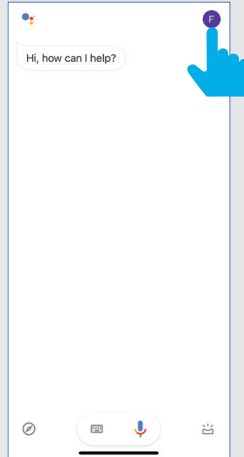
Open Google App



Open the
Google Assistant App.

2

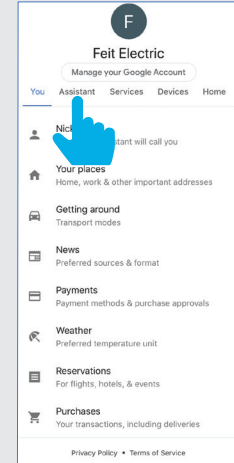
Enable Feit App



In the upper right corner tap
the **Circle** icon.

3

Google Assistant

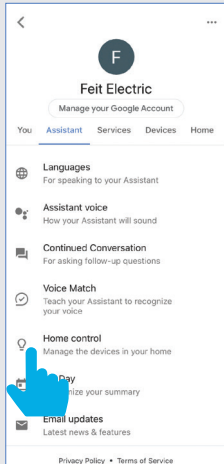


Tap **Assistant**.

CONNECTING TO GOOGLE ASSISTANT

4

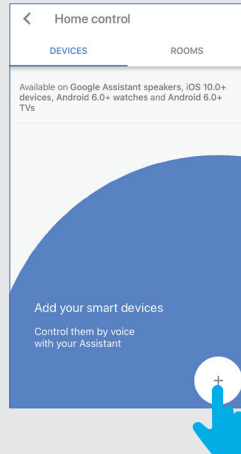
Home Control



Tap **Home Control**.

5

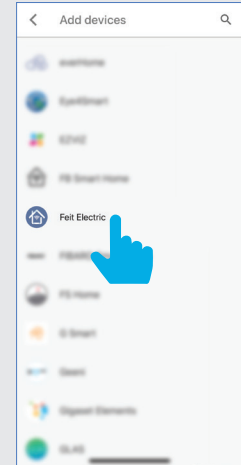
Add Devices



To add a device tap on the Circle (+) located in the lower right corner.

6

Enable Feit App

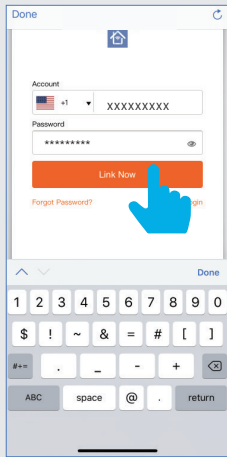


Scroll down and tap **Feit Electric App**.

CONNECTING TO GOOGLE ASSISTANT

7

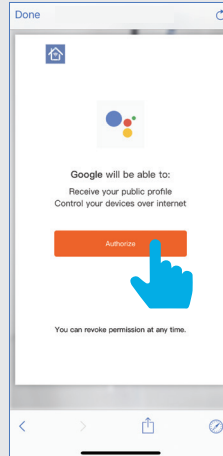
Link



Enter the user & password from the Feit Electric App then tap **Link Now**.

8

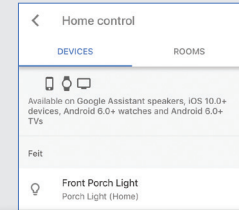
Authorize



Tap **Authorize**.

9

Assign Rooms



NOTE: Additional devices will be added automatically when added to the Feit Electric App.

Once devices are connected tap **Done** to return to Devices or tap the **Pen** icon to assign a room.

Minimum System Requirements

iOS 9.3 and Android 4.4

May not be compatible with all devices.
If you are unable to download the app, the
product is not compatible with your device.

For Technical Support

Please contact Feit Electric at:
(562) 463-BULB (2852)
info@feit.com
or visit us at: www.feit.com

Amazon, Alexa and all related logos are trademarks
of Amazon.com, Inc. or its affiliates.

© Google Inc. All rights reserved. Google, Works with the Google Assistant
and the Google Play Word are registered trademarks of Google Inc.

Apple, the Apple logo, iPad, iPhone and Siri and the Siri logo are trademarks
of Apple Inc., registered in the U.S. and other countries.
App Store is a service mark of Apple Inc.



